



HALO PRO FR & LUNA PRO FR

FLAME RETARDANT & MOISTURE REPELLENT FABRICS

LOUVOLITE
COMMERCIAL

www.louvolitecommercial.com

HALO PRO FR LIGHT FILTERING



HALO PRO FR FROST

3m 1733200FR



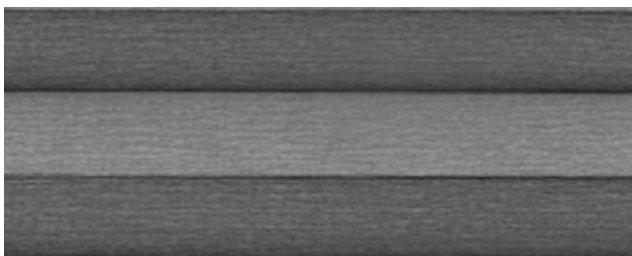
HALO PRO FR IVORY

3m 1733440FR



HALO PRO FR BIRCH

3m 1733193FR



HALO PRO FR METEOR

3m 1733695FR

LUNA PRO FR BLACKOUT



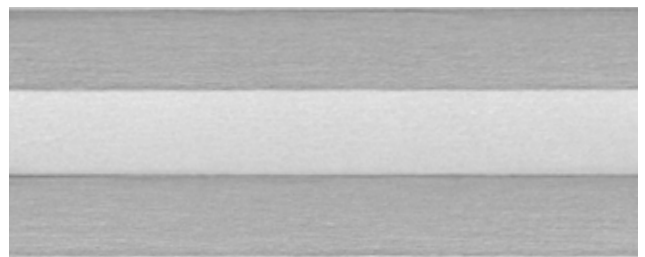
LUNA PRO FR CLOUD

3m 1735200FR



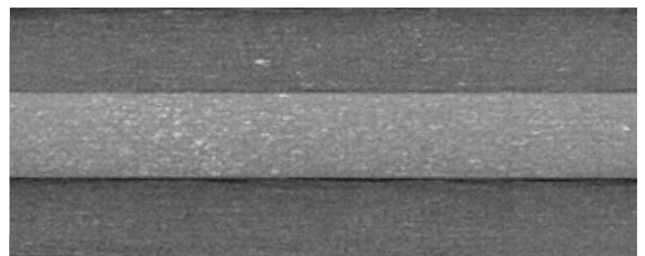
LUNA PRO FR BONE

3m 1735440FR



LUNA PRO FR PUMICE

3m 1735193FR

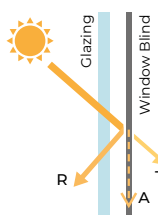


LUNA PRO FR GRAPHITE

3m 1735695FR

Specifications	Halo Pro FR	Luna Pro FR
Colour Range	4	4
Dim Out	Light Filtering	Blackout
Composition	100% Polyester	100% Polyester
Exterior Colour	White	White
Fabric Width	3m	3m
Length Per Box	20m	20m
Weight	170g/m ²	215g/m ²
Thickness	0.32mm	0.40mm
Blind Type	Cellular	Cellular
Cell Size	25mm	25mm
Cell Shape	D	D
Colour Fastness (scale of 8)	8 - BS EN ISO 105-B02-2014	7-8 - BS EN ISO 105-B02-2014
Flammability Standard	BS 5867 Part 2 Type B	BS 5867 Part 2 Type B
Environmental Certification	OEKO-TEX® STeP Greenshield - VOC Safe Fabrics	OEKO-TEX® STeP Greenshield - VOC Safe Fabrics
Moisture Repellent	Yes. Halo Pro FR is suitable for high moisture areas.	Yes. Luna Pro FR is suitable for high moisture areas.
Cleaning	Not suitable for cleaning.	Not suitable for cleaning.

Solar, Visual & Colour Fastness Properties																			
	Heat/Solar			Light/Visual			UV Block	CF	DP	Shading Co-efficient					Gtot				
	R _s	A _s	T _s	R _v	A _v	T _v				SG	DG	DGLE	SCLE	TG	SG	DG	DGLE	SCLE	TG
Halo Pro FR																			
Birch	75	21	4	75	23	2	98	8	0	0.32	0.36	0.37	0.28	0.37	0.28	0.31	0.32	0.24	0.32
Frost	71	6	23	72	4	24	78	8	0	0.38	0.40	0.39	0.28	0.38	0.33	0.35	0.34	0.25	0.33
Ivory	73	2	25	75	0	25	80	8	0	0.37	0.39	0.39	0.28	0.38	0.32	0.34	0.34	0.25	0.33
Meteor	65	25	10	67	24	9	93	8	0	0.40	0.42	0.41	0.29	0.40	0.35	0.37	0.36	0.25	0.35
Luna Pro FR																			
Bone	77	23	0	76	24	0	100	7	0	0.30	0.34	0.36	0.27	0.36	0.26	0.30	0.32	0.24	0.31
Cloud	77	23	0	76	24	0	100	8	0	0.30	0.34	0.36	0.27	0.36	0.26	0.30	0.32	0.24	0.31
Graphite	77	23	0	76	24	0	100	8	0	0.30	0.34	0.36	0.27	0.36	0.26	0.30	0.32	0.24	0.31
Pumice	77	23	0	76	24	0	100	7	0	0.30	0.34	0.36	0.27	0.36	0.26	0.30	0.32	0.24	0.31



Solar Gain: The amount of heat increase resulting from solar energy entering a room. It is the total of three separate parts - the amount of energy transmitted directly into the room, the energy which is absorbed by the blind and the proportion of energy which is absorbed by the window.

R: % of reflected heat and light.
A: % of absorbed heat and light.
T: % of transmitted heat and light.

UV Block: the % of UV light blocked by the fabric.

Colour Fastness (CF): Scale of 8, BS EN ISO 105-B02-2014.

Darkening Performance (DP): Scale of 0-4. 0: lowest opacity 4: highest. A rating of 4 indicates the product is completely opaque with no pinholes or light transfer.

Please note: Blackout fabric does not create total darkness. As a blind, there will be lightstrike around the blind edges.

Shading Co-efficient (EN 14501) The solar heat gain with the blind at the window divided by the solar heat gain with no blind at the window. The lower the shading co-efficient, the higher the efficiency of the fabric.

Gtot: Amount of heat entering through the glazing and shading combined.

Glazing system (EN 410)
SG: Clear Single Glazing.
DG: Clear Double Glazing.
DGLE: Clear Double Glazing Low Emissivity.
SCLE: Solar Control Double Glazing Low Emissivity.
TG: Triple Glazing.

HALO PRO FR & LUNA PRO FR



t: +44 (0)161 882 5050 e: commercial@louvolite.com
www.louvolitecommercial.com