

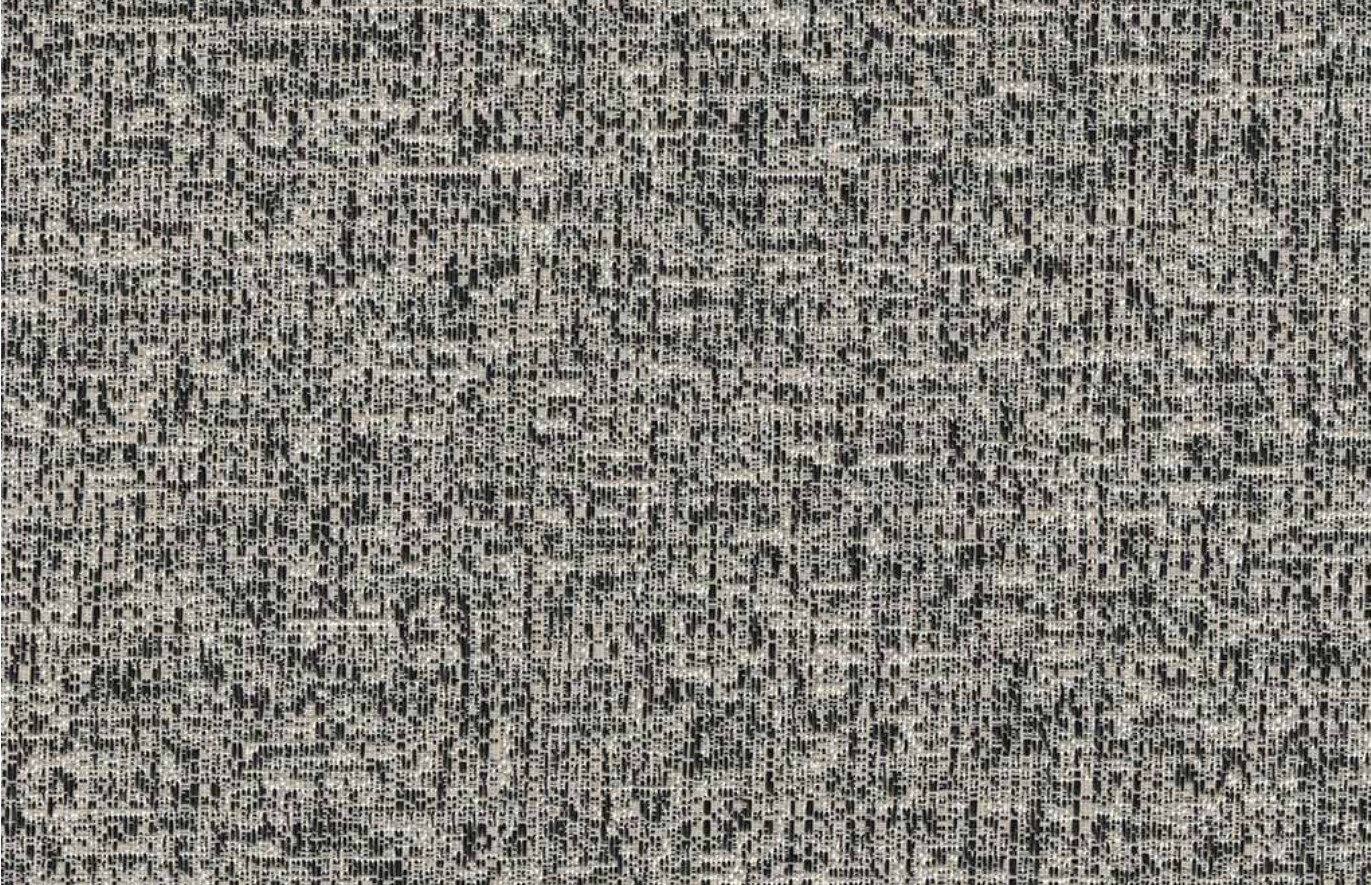
# MATRIX

FLAME RETARDANT BLACKOUT FABRICS

LOUVOLITE  
COMMERCIAL

[www.louvolitecommercial.com](http://www.louvolitecommercial.com)

# MATRIX

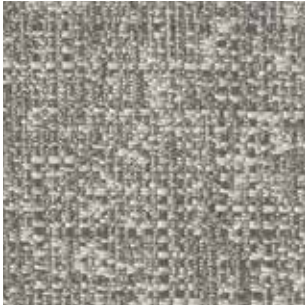


MONOCHROME



MONOCHROME

2.1m 2053594A  
89mm 2053594D



FLAX

2.1m 2053928A  
89mm 2053928D



HESSIAN

2.1m 2053440A  
89mm 2053440D



CALICO

2.1m 2053112A  
89mm 2053112D



REED

2.1m 2053862A  
89mm 2053862D

# BLACKOUT

## LUXURY WEAVE

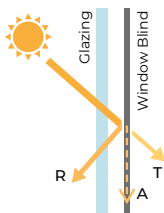
# ROLLER

## AND VERTICAL

Specifications	Matrix
Colour Range	5
Dim Out	Blackout
Composition	100% Polyester
Exterior Colour	White
Roller Width	2.1m
Roller Roll Length	20m
Vertical Louvre Widths	89mm
Vertical Roll Length	100m
Weight	426g/m <sup>2</sup>
Thickness	0.72mm
Blind Types	Roller, Panel, Vertical
Colour Fastness (scale of 8)	3-8 - BS EN ISO 105-B02-2014
Flammability Standard	BS 5867 Part 2 Type B
Environmental Certification	OEKO-TEX® STeP
	Greenshield - VOC Safe Fabrics
Cleaning	Not suitable for cleaning with a damp or wet cloth.

### Solar, Visual & Colour Fastness Properties

	Heat/Solar			Light/Visual			UV Block	CF	DP	Shading Co-efficient					Gtot				
	R <sub>S</sub>	A <sub>S</sub>	T <sub>S</sub>	R <sub>V</sub>	A <sub>V</sub>	T <sub>V</sub>				SG	DG	DGLE	SCLE	TG	SG	DG	DGLE	SCLE	TG
Calico	74	26	0	82	18	0	100	7	2	0.32	0.36	0.38	0.28	0.37	0.28	0.32	0.33	0.24	0.32
Flax	74	26	0	82	18	0	100	3	2	0.32	0.36	0.38	0.28	0.37	0.28	0.32	0.33	0.24	0.32
Hessian	74	26	0	82	18	0	100	4	2	0.32	0.36	0.38	0.28	0.37	0.28	0.32	0.33	0.24	0.32
Monochrome	74	26	0	82	18	0	100	8	2	0.32	0.36	0.38	0.28	0.37	0.28	0.32	0.33	0.24	0.32
Reed	74	26	0	82	18	0	100	7	2	0.32	0.36	0.38	0.28	0.37	0.28	0.32	0.33	0.24	0.32



**Solar Gain:** The amount of heat increase resulting from solar energy entering a room. It is the total of three separate parts - the amount of energy transmitted directly into the room, the energy which is absorbed by the blind and the proportion of energy which is absorbed by the window.

**R:** % of reflected heat and light.  
**A:** % of absorbed heat and light.  
**T:** % of transmitted heat and light.

**UV Block:** the % of UV light blocked by the fabric.

**Colour Fastness (CF):** Scale of 8, BS EN ISO 105-B02-2014.

**Darkening Performance (DP):** Scale of 0-4. 0: lowest opacity 4: highest. A rating of 4 indicates the product is completely opaque with no pinholes or light transfer.

**Please note:** Blackout fabric does not create total darkness. As a blind, there will be lightstrike around the blind edges.

**Shading Co-efficient (EN 14501)** The solar heat gain with the blind at the window divided by the solar heat gain with no blind at the window. The lower the shading co-efficient, the higher the efficiency of the fabric.

**Gtot:** Amount of heat entering through the glazing and shading combined.

**Glazing system (EN 410)**  
**SG:** Clear Single Glazing.  
**DG:** Clear Double Glazing.  
**DGLE:** Clear Double Glazing Low Emissivity.  
**SCLE:** Solar Control Double Glazing Low Emissivity.  
**TG:** Triple Glazing.

# MATRIX



t: +44 (0)161 882 5050 e: [commercial@louvolite.com](mailto:commercial@louvolite.com)  
[www.louvolitecommercial.com](http://www.louvolitecommercial.com)