

3%

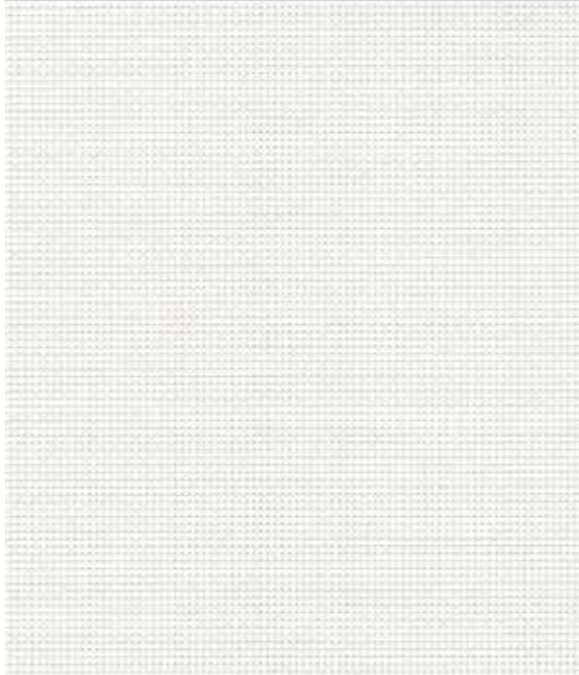
# PERSPECTIVE 3% & PERSPECTIVE PUREVIEW®

SOLAR PROTECTION FABRICS

LOUVOLITE  
COMMERCIAL

[www.louvolitecommercial.com](http://www.louvolitecommercial.com)

# PERSPECTIVE 3%



WHITE

|       |          |
|-------|----------|
| 2m    | 2033910A |
| 2.5m  | 2034910A |
| 3m    | 1391490A |
| 89mm  | 1391490D |
| 127mm | 1391490B |



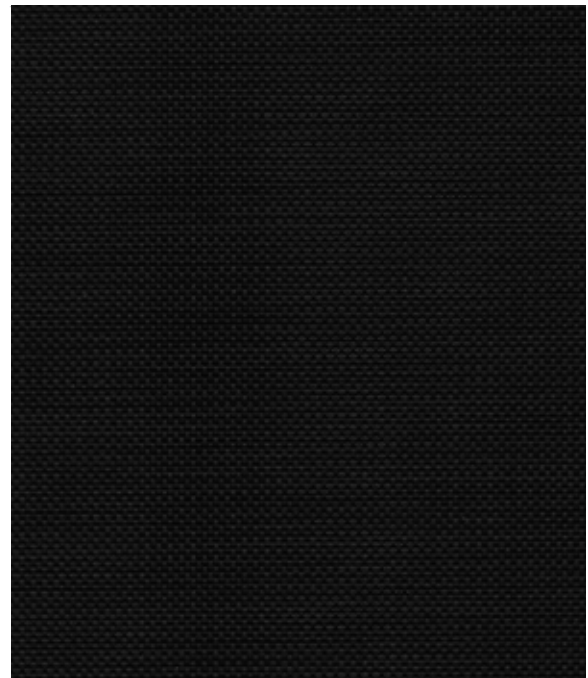
BEIGE

|       |          |
|-------|----------|
| 2m    | 2033422A |
| 2.5m  | 2034422A |
| 3m    | 1391612A |
| 89mm  | 1391612D |
| 127mm | 1391612B |



GREY

|       |          |
|-------|----------|
| 2m    | 2033292A |
| 2.5m  | 2034292A |
| 3m    | 1391595A |
| 89mm  | 1391595D |
| 127mm | 1391595B |



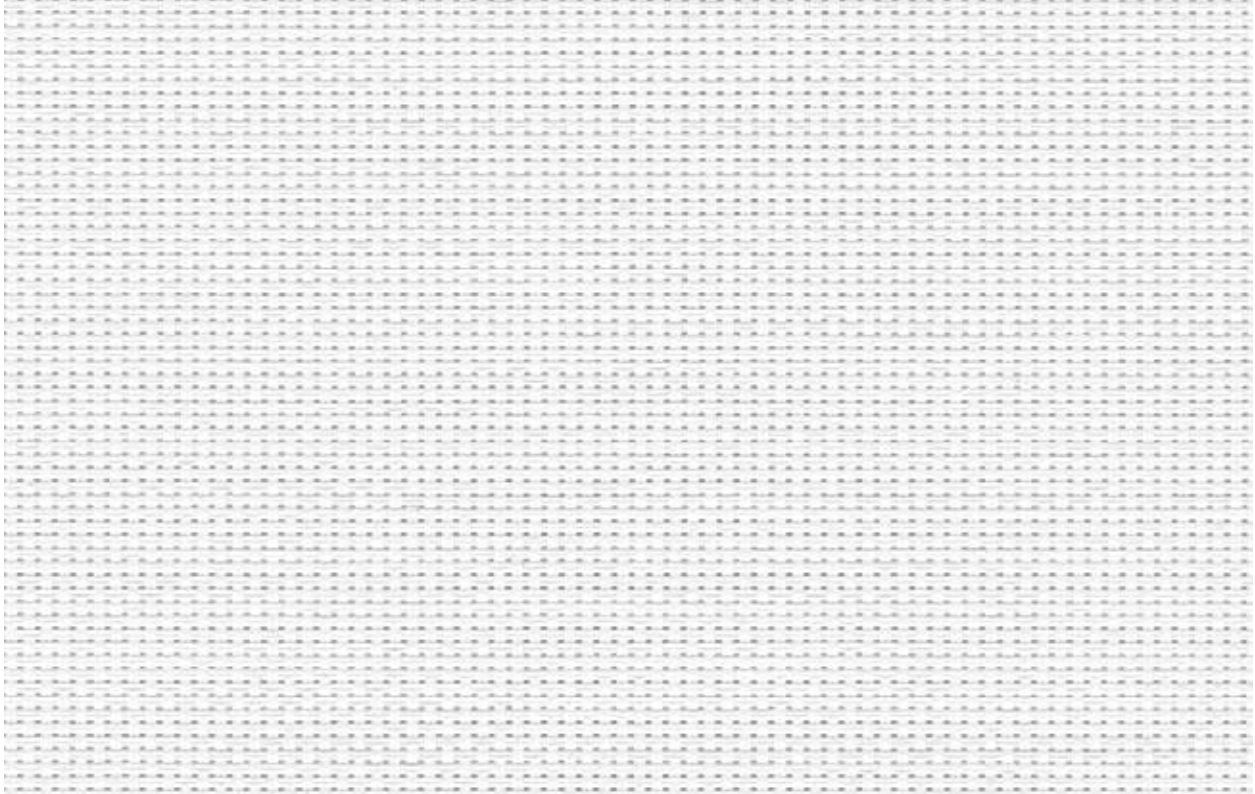
BLACK

|       |          |
|-------|----------|
| 2m    | 2033195A |
| 2.5m  | 2034195A |
| 3m    | 1391399A |
| 89mm  | 1391399D |
| 127mm | 1391399B |

# PERSPECTIVE PUREVIEW®

## SUPERIOR GLARE REDUCING 3% SCREEN

A white 3% screen that provides the same clear view out performance as a dark coloured screen. Perspective PureView® successfully reduces glare, provides a better view out and retains a level of privacy from the outside, all without compromising the natural light entering the room.



PERSPECTIVE PUREVIEW® WHITE

|       |          |
|-------|----------|
| 2m    | 2070910A |
| 2.5m  | 2071910A |
| 3m    | 2072910A |
| 89mm  | 2072910B |
| 127mm | 2072910D |



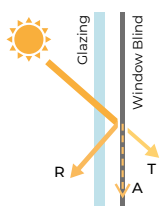
PERSPECTIVE PUREVIEW® WHITE 3%



STANDARD WHITE 3%

| Specifications               | Perspective 3%   | Perspective PureView®  |              |              |
|------------------------------|--|--|--------------|--------------|
| Colour Range                 | 4  | 1  |              |              |
| Openness                     | 3%   | 3%   |              |              |
| Dim Out                      | Light Filtering  | Light Filtering  |              |              |
| Composition                  | 78% PVC 22% Polyester  | 78% PVC 22% Polyester  |              |              |
| Exterior Colour              | Same as face   | Same as face   |              |              |
| Roller Widths                | 2m, 2.5m, 3m   | 2m, 2.5m, 3m   |              |              |
| Roller Roll Length           | 20m  | 20m  |              |              |
| Vertical Louvre Widths       | 89mm, 127mm  | 89mm, 127mm  |              |              |
| Vertical Roll Length         | 100m   | 100m   |              |              |
| Weight                       | 450g/m <sup>2</sup>  | 450g/m <sup>2</sup>  |              |              |
| Thickness                    | 0.61mm   | 0.56mm   |              |              |
| Fabric Finish                | 2x2 Basket Weave   | 2x2 Basket Weave   |              |              |
| Blind Types                  | Roller, Panel, Vertical  | Roller, Panel, Vertical  |              |              |
| Mechanical Resistance        | Warp Weft  | Warp Weft  |              |              |
| Breaking                     | ≥ 1436.6 N/5cm   | ≥ 1353.6 N/5cm   | ≥ 1700 N/5cm | ≥ 1400 N/5cm |
| Tearing                      | ≥ 23.8 N   | ≥ 19.2 N   | ≥ 90 N       | ≥ 70 N       |
| Colour Fastness (scale of 8) | 8 - BS EN ISO 105-B02-2014   | 8 - BS EN ISO 105-B02-2014   |              |              |
| Flammability Standard        | BS 5867 Part 2 Type B, DIN 4102 B1, EN 13773:2003 Class 1, NFPA 701-2015 Method 1  | BS 5867 Part 2 Type B, DIN 4102 B1, EN 13773:2003 Class 1, NFPA 701-2015 Method 1  |              |              |
| Environmental Certification  | Greenguard® Gold Certified, Greenguard® Certified, Oeko-tex Standard 100 Certified | Greenguard® Gold Certified, Greenguard® Certified, Oeko-tex Standard 100 Certified |              |              |
| Bacteria & Fungal Resistant  | ASTM E2180, ASTM G21   | ASTM E2180, ASTM G21   |              |              |
| Lead Free                    | ASTM E1645/RoHs  | ASTM E1645/RoHs  |              |              |
| Cleaning                     | Gently wipe clean with a soft, damp cloth. Allow to dry in down position.          | Gently wipe clean with a soft, damp cloth. Allow to dry in down position.          |              |              |

| Solar, Visual & Colour Fastness Properties |                |                |                |                |                |                |          |    |    |                      |      |      |      |      |      |      |      |      |      |
|--|----------------|----------------|----------------|----------------|----------------|----------------|----------|----|----|----------------------|------|------|------|------|------|------|------|------|------|
|  | Heat/Solar     |                |                | Light/Visual   |                |                | UV Block | CF | DP | Shading Co-efficient |      |      |      |      | Gtot |      |      |      |      |
|  | R <sub>s</sub> | A <sub>s</sub> | T <sub>s</sub> | R <sub>v</sub> | A <sub>v</sub> | T <sub>v</sub> |          |    |    | SG                   | DG   | DGLE | SCLE | TG   | SG   | DG   | DGLE | SCLE | TG   |
| Beige                                      | 64             | 19             | 17             | 72             | 16             | 12             | 93       | 8  | 0  | 0.42                 | 0.43 | 0.42 | 0.29 | 0.41 | 0.36 | 0.38 | 0.36 | 0.25 | 0.35 |
| Black                                      | 3              | 92             | 5              | 3              | 92             | 5              | 95       | 8  | 0  | 0.81                 | 0.78 | 0.64 | 0.35 | 0.61 | 0.70 | 0.68 | 0.56 | 0.31 | 0.53 |
| Grey                                       | 44             | 42             | 14             | 49             | 39             | 12             | 92       | 8  | 0  | 0.54                 | 0.55 | 0.49 | 0.31 | 0.47 | 0.47 | 0.48 | 0.43 | 0.27 | 0.41 |
| White                                      | 72             | 8              | 20             | 81             | 4              | 15             | 92       | 8  | 0  | 0.37                 | 0.39 | 0.39 | 0.28 | 0.38 | 0.32 | 0.34 | 0.34 | 0.25 | 0.33 |
| PureView White                             | 70             | 22             | 8              | 83             | 9              | 8              | 93       | 8  | 0  | 0.36                 | 0.39 | 0.39 | 0.28 | 0.39 | 0.31 | 0.34 | 0.34 | 0.25 | 0.34 |



**Solar Gain:** The amount of heat increase resulting from solar energy entering a room. It is the total of three separate parts - the amount of energy transmitted directly into the room, the energy which is absorbed by the blind and the proportion of energy which is absorbed by the window.

**R:** % of reflected heat and light.  
**A:** % of absorbed heat and light.  
**T:** % of transmitted heat and light.  
**UV Block:** the % of UV light blocked by the fabric.

**Colour Fastness (CF):** Scale of 8, BS EN ISO 105-B02-2014.  
**Darkening Performance (DP):** Scale of 0-4. 0: lowest opacity 4: highest. A rating of 4 indicates the product is completely opaque with no pinholes or light transfer.

**Shading Co-efficient (EN 14501)** The solar heat gain with the blind at the window divided by the solar heat gain with no blind at the window. The lower the shading co-efficient, the higher the efficiency of the fabric.  
**Gtot:** Amount of heat entering through the glazing and shading combined.

**Glazing system (EN 410)**  
**SG:** Clear Single Glazing.  
**DG:** Clear Double Glazing.  
**DGLE:** Clear Double Glazing Low Emissivity.  
**SCLE:** Solar Control Double Glazing Low Emissivity.  
**TG:** Triple Glazing.

# PERSPECTIVE 3% & PERSPECTIVE PUREVIEW®



t: +44 (0)161 882 5050 e: [commercial@louvolite.com](mailto:commercial@louvolite.com)  
[www.louvolitecommercial.com](http://www.louvolitecommercial.com)