

3%

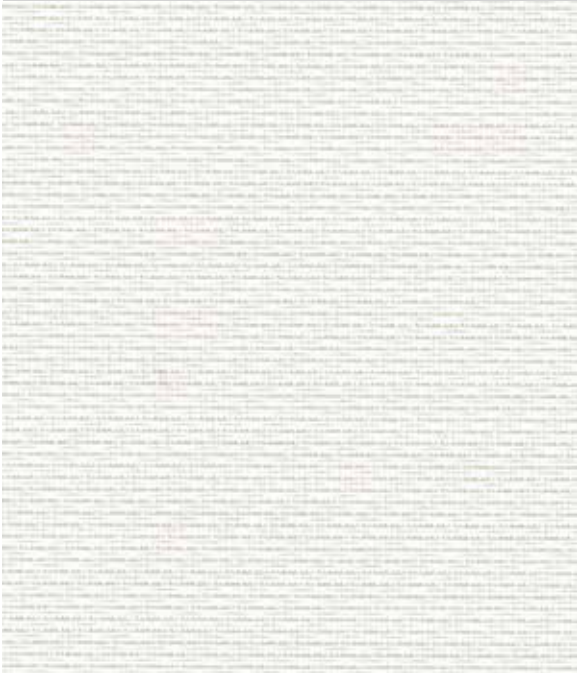
PERSPECTIVE WHITE BACK

SOLAR PROTECTION FABRICS

LOUVOLITE
COMMERCIAL

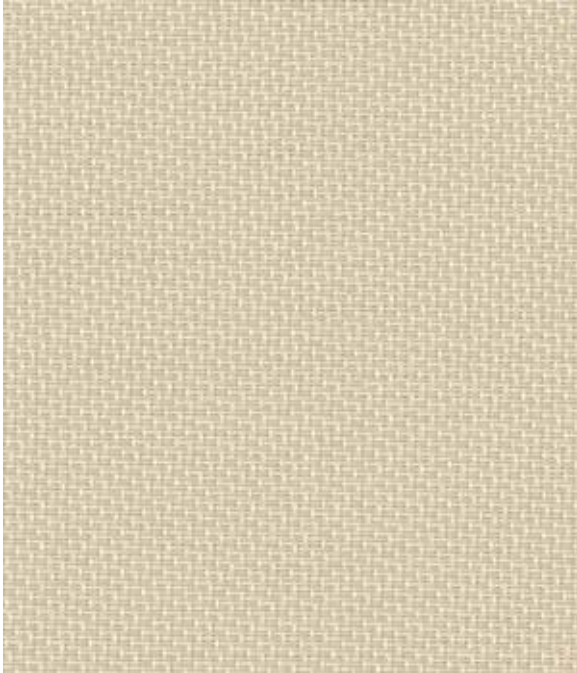
www.louvolitecommercial.com

PERSPECTIVE 3% WHITE BACK



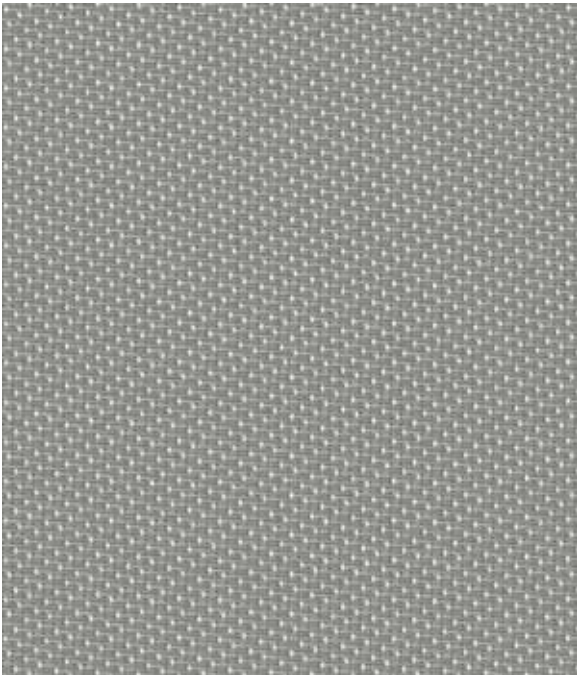
WHITE

2m	2045910A
2.5m	2047910A
3m	2067910A
89mm	2067910D
127mm	2067910B



BEIGE

2m	2045422A
2.5m	2047422A
3m	2067422A
89mm	2067422D
127mm	2067422B



GREY

2m	2045292A
2.5m	2047292A
3m	2067292A
89mm	2067292D
127mm	2067292B

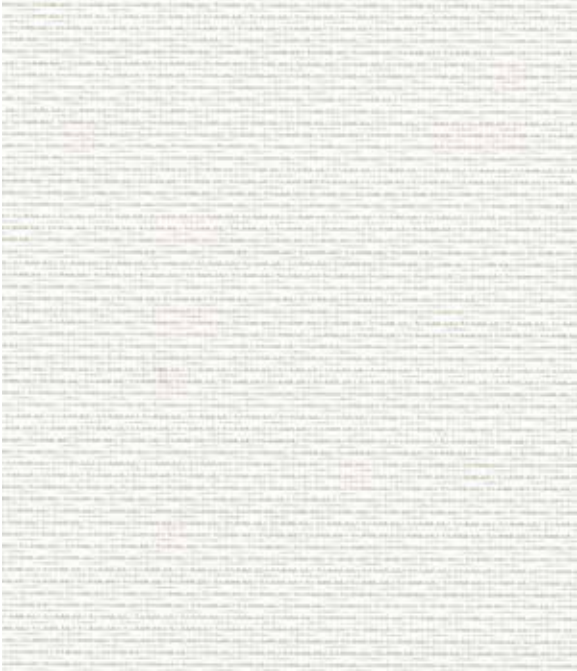


BLACK

2m	2045195A
2.5m	2047195A
3m	2067195A
89mm	2067195D
127mm	2067195B

PERSPECTIVE 3% WHITE BACK

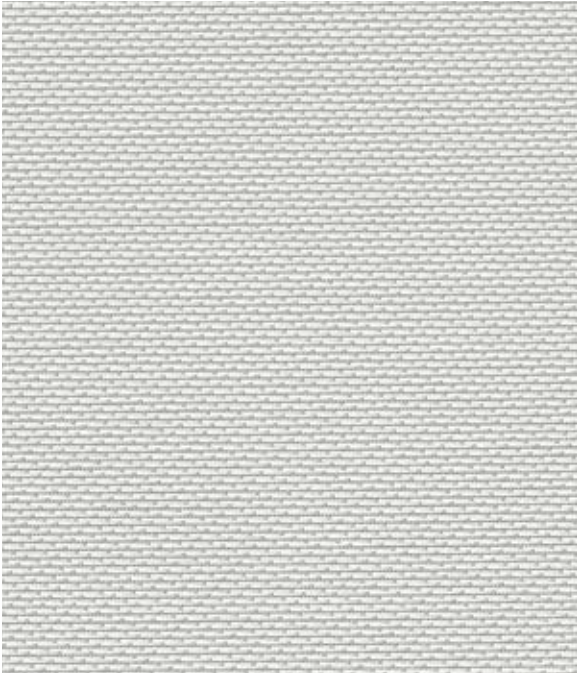
These are the reverse of the fabrics.



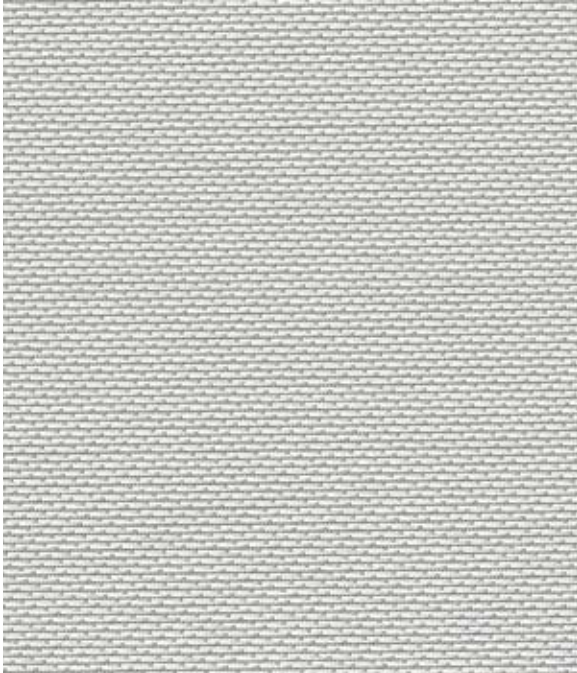
WHITE



BEIGE



GREY



BLACK

3 WIDTHS

2m, 2.5m and 3m

WHITE BACK

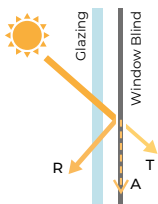
UNIFORM EXTERIOR

The twill design allows the combination of a coloured face with a white back for a uniform look to the building facade.

Specifications	Perspective 3% White Back
Colour Range	4
Openness	3%
Dim Out	Light Filtering
Composition	78% PVC 22% Polyester
Exterior Colour	White back
Roller Width	2m, 2.5m, 3m
Roller Roll Length	20m
Vertical Louvre Widths	89mm, 127mm
Vertical Roll Length	100m
Weight	450g/m ²
Thickness	0.65mm
Fabric Finish	Two sided, Twill
Blind Types	Roller, Panel, Vertical
Mechanical Resistance	Warp Weft
Breaking	≥ 1222.2 N/5cm ≥ 1222.2 N/5cm
Tearing	≥ 23.1 N ≥ 20.3 N
Colour Fastness (scale of 8)	8 - BS EN ISO 105-B02-2014
Flammability Standard	BS 5867 Part 2 Type B DIN 4102 B1 EN 13773:2003 Class 1 NFPA 701-2015 Method 1
Environmental Certification	Greenguard® Gold Certified Greenguard® Certified Oeko-tex Standard 100 Certified
Bacteria & Fungal Resistant	ASTM E2180, ASTM G21
Lead Free	ASTM E1645/RoHs
Cleaning	Gently wipe clean with a soft, damp cloth. Allow to dry in down position.

Solar, Visual & Colour Fastness Properties

	Heat/Solar			Light/Visual			UV Block	CF	DP	Shading Co-efficient					Gtot				
	R _s	A _s	T _s	R _v	A _v	T _v				SG	DG	DGLE	SCLE	TG	SG	DG	DGLE	SCLE	TG
Beige	62	19	19	70	15	15	95	8	0	0.43	0.45	0.43	0.29	0.41	0.38	0.39	0.37	0.25	0.36
Black	44	49	7	53	41	7	95	8	1	0.54	0.55	0.49	0.31	0.47	0.47	0.47	0.43	0.27	0.41
Grey	52	37	11	59	32	8	95	8	0	0.49	0.50	0.46	0.30	0.45	0.42	0.43	0.40	0.26	0.39
White	67	10	23	76	4	20	95	8	0	0.40	0.42	0.41	0.29	0.40	0.35	0.37	0.35	0.25	0.35



Solar Gain: The amount of heat increase resulting from solar energy entering a room. It is the total of three separate parts - the amount of energy transmitted directly into the room, the energy which is absorbed by the blind and the proportion of energy which is absorbed by the window.

R: % of reflected heat and light.
A: % of absorbed heat and light.
T: % of transmitted heat and light.
UV Block: the % of UV light blocked by the fabric.

Colour Fastness (CF): Scale of 8, BS EN ISO 105-B02-2014.
Darkening Performance (DP): Scale of 0-4. 0: lowest opacity 4: highest. A rating of 4 indicates the product is completely opaque with no pinholes or light transfer.

Shading Co-efficient (EN 14501) The solar heat gain with the blind at the window divided by the solar heat gain with no blind at the window. The lower the shading co-efficient, the higher the efficiency of the fabric.
Gtot: Amount of heat entering through the glazing and shading combined.

Glazing system (EN 410)
SG: Clear Single Glazing.
DG: Clear Double Glazing.
DGLE: Clear Double Glazing Low Emissivity.
SCLE: Solar Control Double Glazing Low Emissivity.
TG: Triple Glazing.

PERSPECTIVE 3% WHITE BACK

