

3%

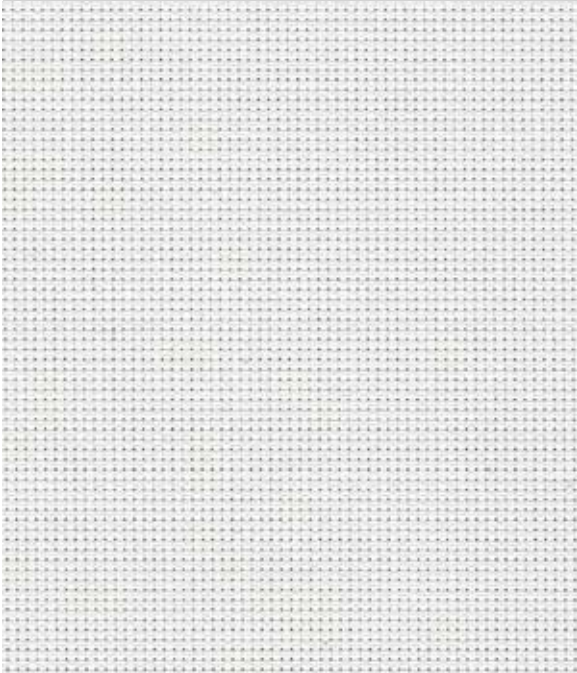
PERSPECTIVE ALUVIEW

SOLAR PROTECTION FABRICS

LOUVOLITE
COMMERCIAL

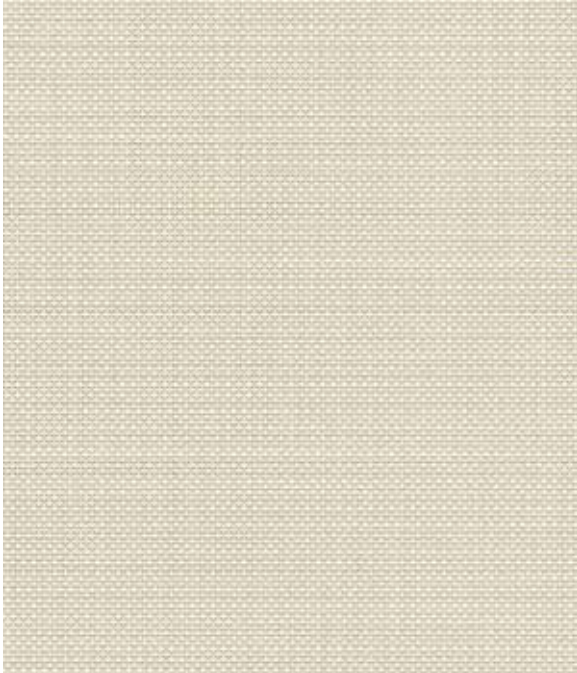
www.louvolitecommercial.com

PERSPECTIVE ALUVIEW



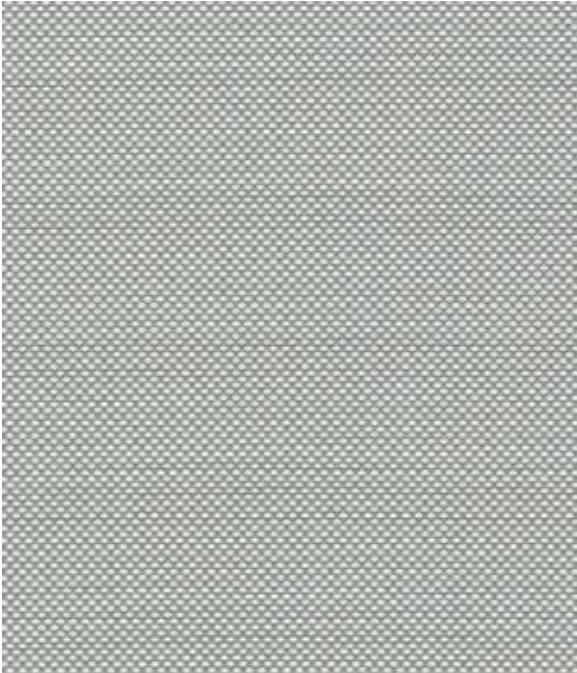
WHITE

2.5m 2068910A
89mm 2068910D
127mm 2068910B



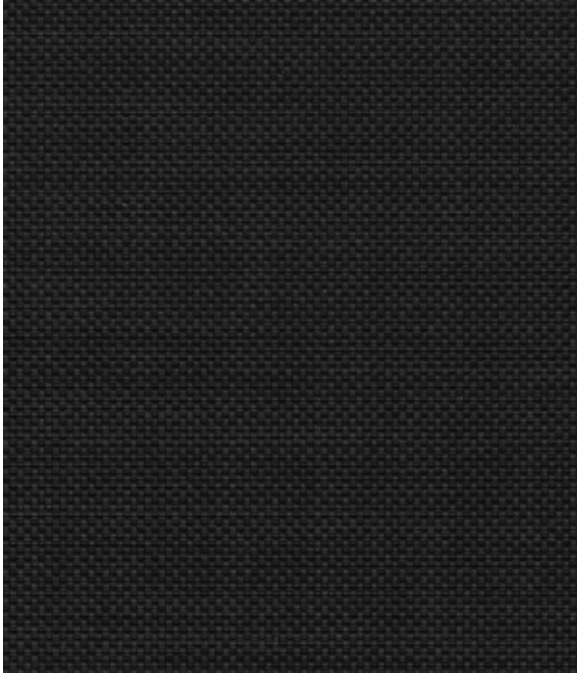
BEIGE

2.5m 2068422A
89mm 2068422D
127mm 2068422B



GREY

2.5m 2068292A
89mm 2068292D
127mm 2068292B

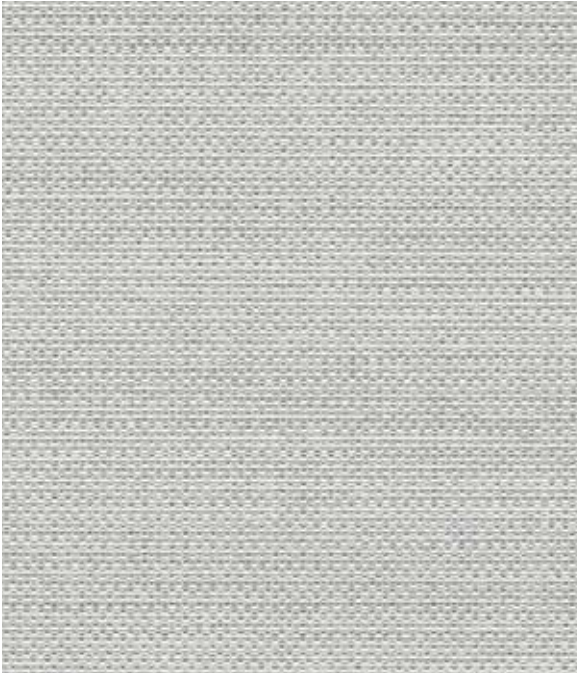


BLACK

2.5m 2068195A
89mm 2068195D
127mm 2068195B

PERSPECTIVE ALUVIEW

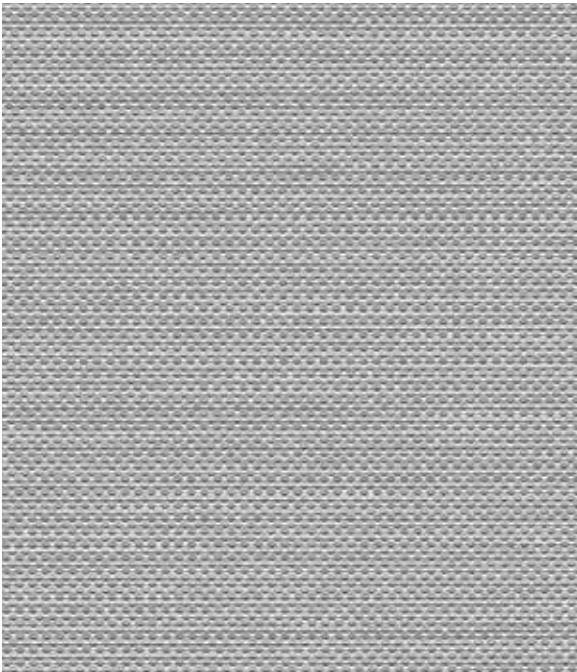
These are the reverse of the fabrics.



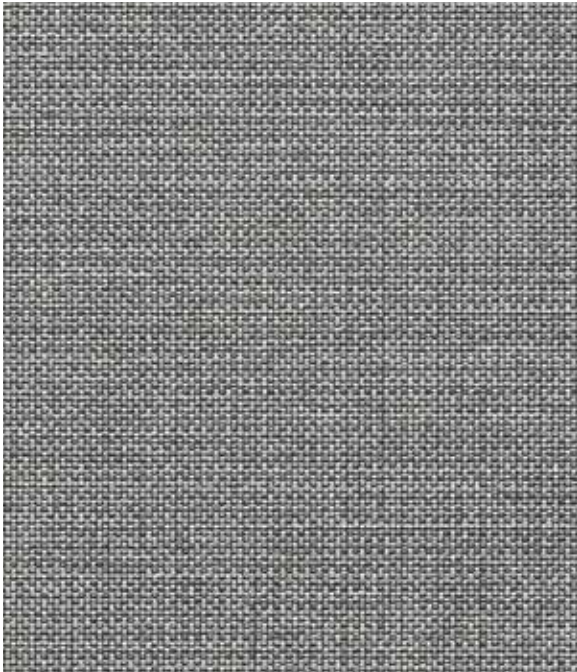
WHITE



BEIGE



GREY



BLACK

REFLECTIVE ALUMINIUM BACK

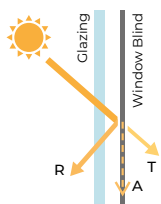
LOW E PERFORMANCE

Perspective Aluview's metallised backing acts as a thermal barrier at the window. It enhances the thermal energy and low-e performance of the fabric, reducing the demand for artificial heating and cooling. This reflective 3% screen provides optimum natural light with visual comfort, better glare control and outward visibility.

Specifications	Perspective Aluview
Colour Range	4
Openness	3%
Dim Out	Light Filtering
Composition	76% PVC 22% Polyester 2% Aluminium Coating
Exterior Colour	Aluminised Coating
Roller Width	2.5m
Roller Roll Length	20m
Vertical Louvre Widths	89mm, 127mm
Vertical Roll Length	100m
Weight	512g/m ²
Thickness	0.64mm
Fabric Finish	2x2 Basket Weave
Blind Types	Roller, Panel, Vertical
Mechanical Resistance	Warp Weft
Breaking	≥ 1497 N/5cm ≥ 1370.6 N/5cm
Tearing	≥ 27.9 N ≥ 23.8 N
Colour Fastness (scale of 8)	8 - BS EN ISO 105-B02-2014
Flammability Standard	BS 5867 Part 2 Type B DIN 4102 B1 EN 13773:2003 Class 1 NFPA 701-2015 Method 1
Environmental Certification Flammability Standard	Greenguard® Gold Certified Greenguard® Certified Oeko-tex Standard 100 Certified
Bacteria & Fungal Resistant	ASTM E2180, ASTM G21
Lead Free	ASTM E1645/RoHs
Cleaning	The aluminium coating is fragile and must be handled with care to avoid damage. Gently wipe clean the fabric face with a soft, damp cloth. Allow to dry in down position.

Solar, Visual & Colour Fastness Properties

	Heat/Solar			Light/Visual			UV Block	CF	DP	Shading Co-efficient					Gtot				
	R _s	A _s	T _s	R _v	A _v	T _v				SG	DG	DGLE	SCLE	TG	SG	DG	DGLE	SCLE	TG
Beige	70	22	8	66	26	8	96	8	0	0.36	0.39	0.39	0.28	0.39	0.31	0.34	0.34	0.25	0.34
Black	44	53	3	43	53	3	96	8	0	0.53	0.54	0.49	0.31	0.47	0.46	0.47	0.42	0.27	0.41
Grey	69	23	8	65	26	9	96	8	0	0.37	0.40	0.40	0.28	0.39	0.32	0.35	0.34	0.25	0.34
White	73	16	11	73	17	10	95	8	0	0.35	0.38	0.38	0.28	0.39	0.30	0.33	0.33	0.24	0.33



Solar Gain: The amount of heat increase resulting from solar energy entering a room. It is the total of three separate parts - the amount of energy transmitted directly into the room, the energy which is absorbed by the blind and the proportion of energy which is absorbed by the window.

R: % of reflected heat and light.
A: % of absorbed heat and light.
T: % of transmitted heat and light.
UV Block: the % of UV light blocked by the fabric.

Colour Fastness (CF): Scale of 8, BS EN ISO 105-B02-2014.
Darkening Performance (DP): Scale of 0-4. 0: lowest opacity 4: highest. A rating of 4 indicates the product is completely opaque with no pinholes or light transfer.

Shading Co-efficient (EN 14501) The solar heat gain with the blind at the window divided by the solar heat gain with no blind at the window. The lower the shading co-efficient, the higher the efficiency of the fabric.
Gtot: Amount of heat entering through the glazing and shading combined.

Glazing system (EN 410)
SG: Clear Single Glazing.
DG: Clear Double Glazing.
DGLE: Clear Double Glazing Low Emissivity.
SCLE: Solar Control Double Glazing Low Emissivity.
TG: Triple Glazing.

PERSPECTIVE ALUVIEW

