

0%

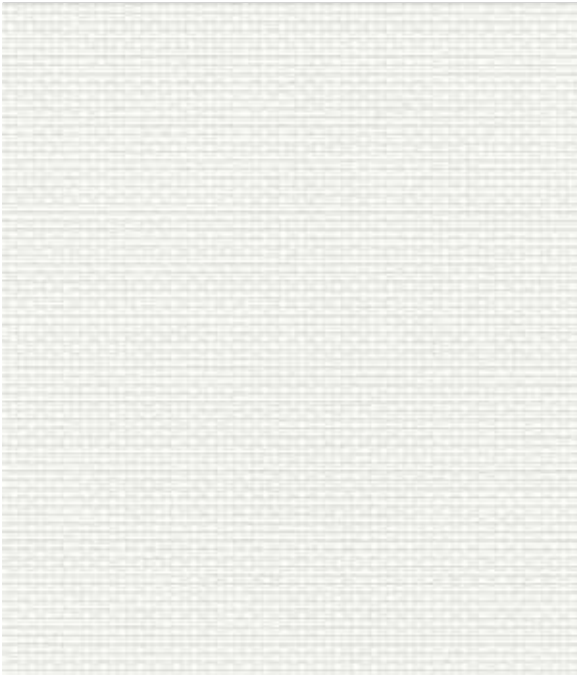
PERSPECTIVE BLACKOUT

SOLAR PROTECTION FABRICS

LOUVOLITE
COMMERCIAL

www.louvolitecommercial.com

PERSPECTIVE BLACKOUT



WHITE

3m 2069910A
89mm 2069910D
127mm 2069910B



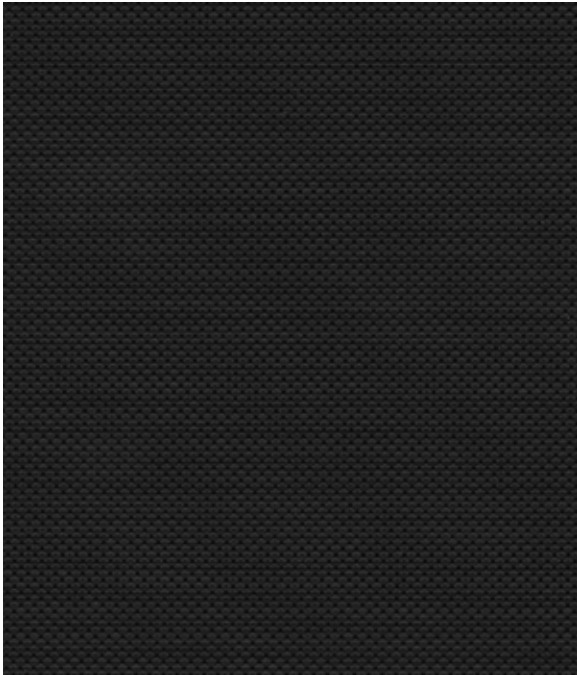
BEIGE

3m 2069422A
89mm 2069422D
127mm 2069422B



GREY

3m 2069292A
89mm 2069292D
127mm 2069292B



BLACK

3m 2069195A
89mm 2069195D
127mm 2069195B

PERSPECTIVE BLACKOUT

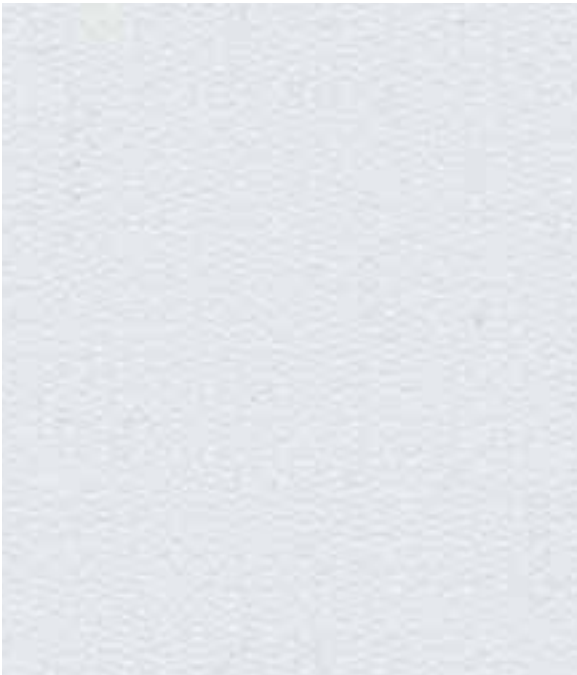
These are the reverse of the fabrics.



WHITE



BEIGE



GREY



BLACK

0% OPENNESS

UNIFORM EXTERIOR AESTHETIC

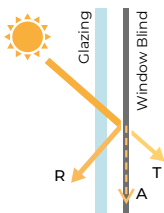
Blocks 100% of UV and up to 75% of solar radiation. Ideal for where room darkening is required while providing a cohesive internal aesthetic with other Perspective screens.

Pair with Perspective 3% White Back for a matching face and a uniform exterior facade.

Specifications	Perspective Blackout
Colour Range	4
Openness	0%
Dim Out	Blackout
Composition	55% PVC 15% Polyester 30% Acrylic coating
Exterior Colour	White
Roller Width	3m
Roller Roll Length	20m
Vertical Louvre Widths	89mm, 127mm
Vertical Roll Length	100m
Weight	660g/m ²
Thickness	0.75mm
Fabric Finish	2x2 Basket Weave with Acrylic Blackout Coating
Blind Types	Roller, Panel, Vertical
Mechanical Resistance	Warp Weft
Breaking	≥ 1551.3 N/5cm ≥ 1142.8 N/5cm
Tearing	≥ 26.6 N ≥ 24.4 N
Colour Fastness (scale of 8)	8 - BS EN ISO 105-B02-2014
Flammability Standard	BS 5867 Part 2 Type B DIN 4102 B1 EN 13773:2003 Class 1 NFPA 701-2015 Method 1
Environmental Certification	Greenguard® Gold Certified Greenguard® Certified Oeko-tex Standard 100 Certified
Bacteria & Fungal Resistant	ASTM E2180, ASTM G21
Lead Free	ASTM E1645/RoHs
Cleaning	Gently wipe clean with a soft, damp cloth. Allow to dry in down position.

Solar, Visual & Colour Fastness Properties

	Heat/Solar			Light/Visual			UV Block	CF	DP	Shading Co-efficient					Gtot				
	R _s	A _s	T _s	R _v	A _v	T _v				SG	DG	DGLE	SCLE	TG	SG	DG	DGLE	SCLE	TG
Beige	71	29	0	81	19	0	100	8	3	0.34	0.38	0.39	0.28	0.38	0.30	0.33	0.34	0.24	0.33
Black	75	25	0	85	15	0	100	8	3	0.31	0.36	0.37	0.28	0.37	0.27	0.31	0.32	0.24	0.32
Grey	71	29	0	81	19	0	100	8	3	0.34	0.38	0.39	0.28	0.38	0.30	0.33	0.34	0.24	0.33
White	71	29	0	81	19	0	100	8	3	0.34	0.38	0.39	0.28	0.38	0.30	0.33	0.34	0.24	0.33



Solar Gain: The amount of heat increase resulting from solar energy entering a room. It is the total of three separate parts - the amount of energy transmitted directly into the room, the energy which is absorbed by the blind and the proportion of energy which is absorbed by the window.

R: % of reflected heat and light.
A: % of absorbed heat and light.
T: % of transmitted heat and light.

UV Block: the % of UV light blocked by the fabric.

Colour Fastness (CF): Scale of 8, BS EN ISO 105-B02-2014.

Darkening Performance (DP): Scale of 0-4. 0: lowest opacity 4: highest. A rating of 4 indicates the product is completely opaque with no pinholes or light transfer.

Please note: Blackout fabric does not create total darkness. As a blind, there will be lightstrike around the blind edges.

Shading Co-efficient (EN 14501) The solar heat gain with the blind at the window divided by the solar heat gain with no blind at the window. The lower the shading co-efficient, the higher the efficiency of the fabric.

Gtot: Amount of heat entering through the glazing and shading combined.

Glazing system (EN 410)
SG: Clear Single Glazing.
DG: Clear Double Glazing.
DGLE: Clear Double Glazing Low Emissivity.
SCLE: Solar Control Double Glazing Low Emissivity.
TG: Triple Glazing.

PERSPECTIVE BLACKOUT



t: +44 (0)161 882 5050 e: commercial@louvolite.com
www.louvolitecommercial.com