

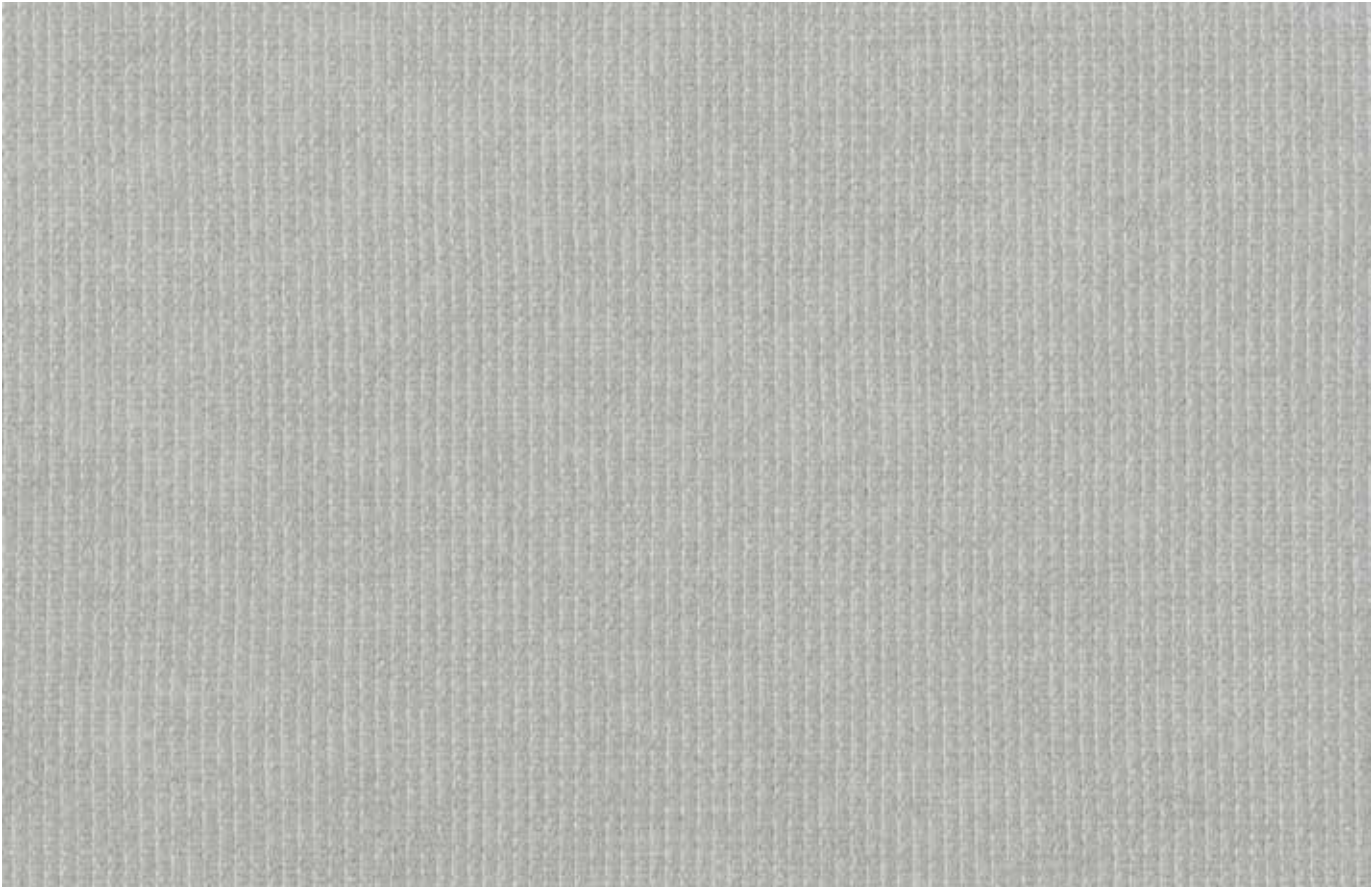
# DAPPLE SPC+

REFLECTIVE FLAME RETARDANT FABRICS

LOUVOLITE  
COMMERCIAL

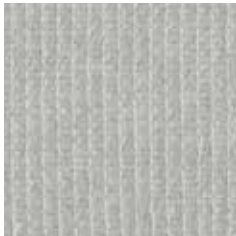
[www.louvolitecommercial.com](http://www.louvolitecommercial.com)

# DAPPLE SPC+

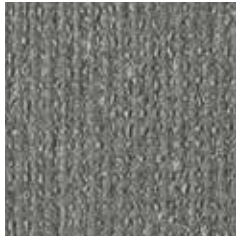


FLINT

## Face



## SPC Back



WHITE

2m 1607910A  
89mm 1607910D  
127mm 1607910B

CHALK

2m 1607403A  
89mm 1607403D  
127mm 1607403B

FLINT

2m 1607492A  
89mm 1607492D  
127mm 1607492B

CHARCOAL

2m 1607298A  
89mm 1607298D  
127mm 1607298B

ROYAL BLUE

2m 1607576A  
89mm 1607576D  
127mm 1607576B

# REFLECTIVE SPC BACK

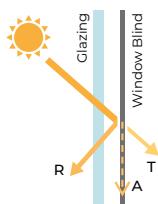
# THERMAL & VISUAL COMFORT

The Solar Protective Coating reflects heat and light more effectively, improving the fabric's thermal energy performance and reducing the demand for artificial heating and cooling. SPC provides enhanced glare control allowing better visual comfort.

Specifications	Dapple SPC+
Colour Range	5
Dim Out	Light Filtering
Composition	100% Polyester
Exterior Colour	Self-coloured, pearlescent Solar Protective Coating (SPC)
Roller Width	2m
Roller Roll Length	20m
Vertical Louvre Widths	89mm, 127mm
Vertical Roll Length	100m
Weight	329g/m <sup>2</sup>
Thickness	0.77mm
Blind Types	Roller, Panel, Vertical
Colour Fastness (scale of 8)	8 - BS EN ISO 105-B02-2014
Flammability Standard	BS 5867 Part 2 Type B
Environmental Certification	OEKO-TEX® SteP Greenshield
Bacteria & Fungal Resistant	ASTM G21, Ultra-Fresh*
Cleaning	Gently wipe clean with a soft, damp cloth. Allow to dry in down position.

\*Ultra-Fresh is a registered trademark of Microban Products Company

Solar, Optical & Colour Fastness Properties																			
	Solar			Visual			UV Block	CF	DP	SC - EN 14501					Gtot				
	R <sub>S</sub>	A <sub>S</sub>	T <sub>S</sub>	R <sub>V</sub>	A <sub>V</sub>	T <sub>V</sub>				A	B	C	D	E	A	B	C	D	E
Chalk	77	12	11	80	11	8	100	8	0	0.32	0.35	0.37	0.28	0.36	0.28	0.31	0.32	0.24	0.32
Charcoal	15	84	0	17	83	0	100	8	0	0.72	0.71	0.59	0.34	0.56	0.62	0.61	0.52	0.29	0.49
Flint	62	31	7	49	50	1	100	8	0	0.41	0.44	0.42	0.29	0.41	0.36	0.38	0.37	0.25	0.36
Royal Blue	41	54	5	16	84	0	100	8	0	0.55	0.56	0.50	0.31	0.48	0.48	0.49	0.43	0.27	0.42
White	77	12	11	80	12	8	100	8	0	0.32	0.35	0.37	0.28	0.36	0.28	0.31	0.32	0.24	0.32



**Solar Gain:** The amount of heat increase resulting from solar energy entering a room. It is the total of three separate parts - the amount of energy transmitted directly into the room, the energy which is absorbed by the blind and the proportion of energy which is absorbed by the window.

**R:** % of reflected heat and light.  
**A:** % of absorbed heat and light.  
**T:** % of transmitted heat and light.  
**UV Block:** the % of UV light blocked by the fabric.

**Colour Fastness (CF):** Scale of 8, BS EN ISO 105-B02-2014.  
**Darkening Performance (DP):** Scale of 0-4. 0: lowest opacity 4: highest. A rating of 4 indicates the product is completely opaque with no pinholes or light transfer.

**Shading Co-efficient (SC):** The solar heat gain with the blind at the window divided by the solar heat gain with no blind at the window. The lower the shading co-efficient, the higher the efficiency of the fabric.  
**Gtot:** Amount of heat entering through the glazing and shading combined.

**Glazing system (EN 410)**  
**A:** Clear Single Glazing.  
**B:** Clear Double Glazing.  
**C:** Clear Double Glazing Low Emissivity.  
**D:** Solar Control Double Glazing Low Emissivity.  
**E:** Triple Glazing.

# DAPPLE SPC+



t: +44 (0)161 882 5050 e: [commercial@louvolite.com](mailto:commercial@louvolite.com)  
[www.louvolitecommercial.com](http://www.louvolitecommercial.com)