



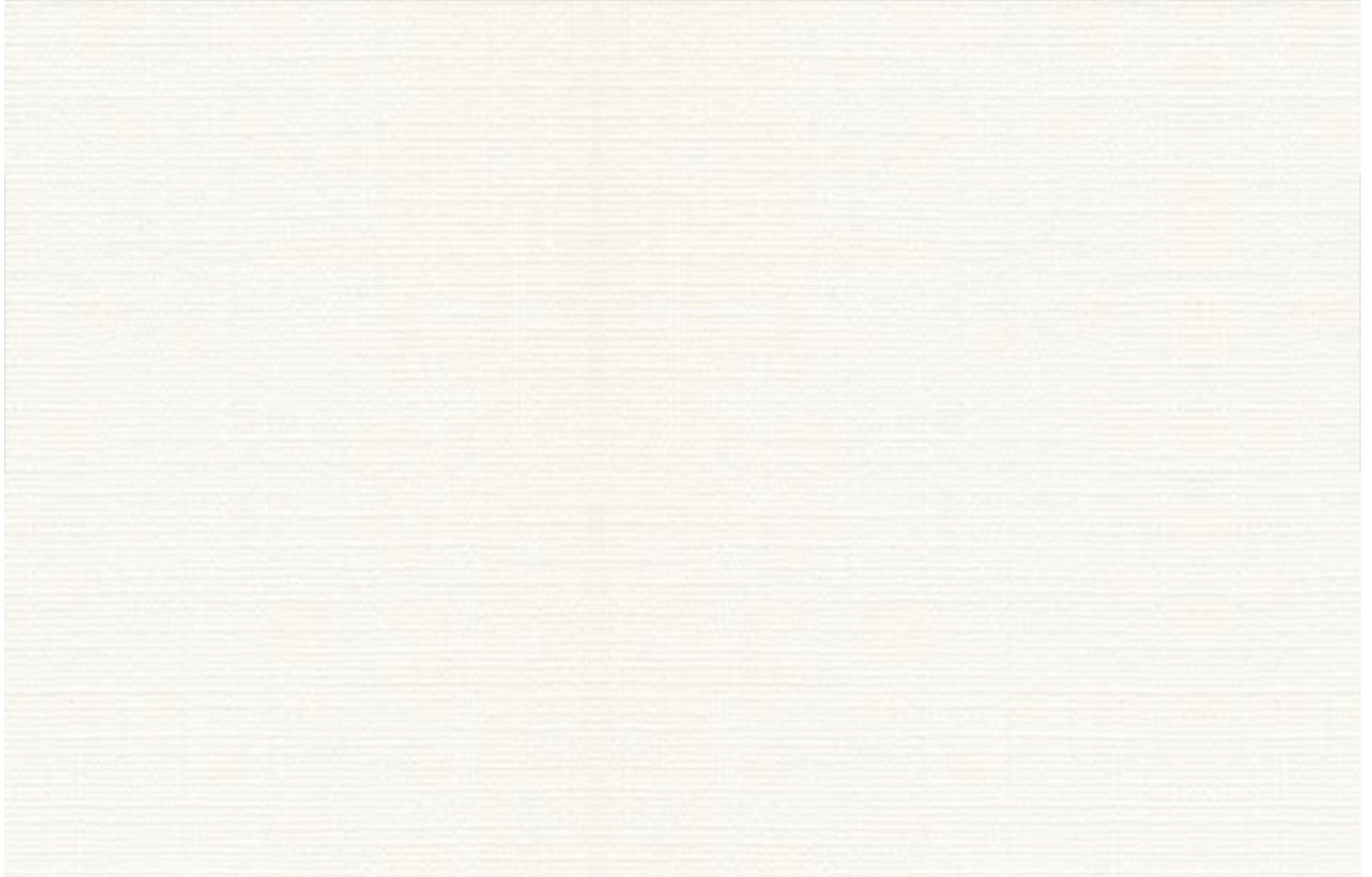
# VERMONT

RECYCLED FLAME RETARDANT FABRICS

**LOUVOLITE**  
COMMERCIAL

[www.louvolitecommercial.com](http://www.louvolitecommercial.com)

# VERMONT

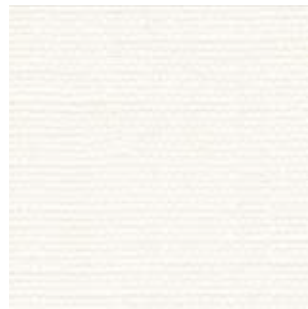


COTTON



FEATHER

2m 1687313A  
89mm 1687313D  
127mm 1687313B



COTTON

2m 1687100A  
89mm 1687100D  
127mm 1687100B



LINEN

2m 1687313A  
89mm 1687313D  
127mm 1687313B



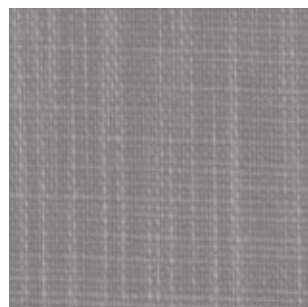
HEMP

2m 1687212A  
89mm 1687212D  
127mm 1687212B



MIST

2m 1687492A  
89mm 1687492D  
127mm 1687492B



SLATE

2m 1687194A  
89mm 1687194D  
127mm 1687194B

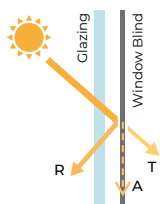
# RECYCLED POLYESTER

# WIPE CLEAN & ULTRA-FRESH

Specifications	Vermont
Colour Range	6
Dim Out	Sheer/Light Filtering
Composition	100% Recycled Polyester
Exterior Colour	Self-coloured
Roller Width	2m
Roller Roll Length	20m
Vertical Louvre Widths	89mm, 127mm
Vertical Roll Length	100m
Weight	309g/m <sup>2</sup>
Thickness	0.56mm
Blind Types	Roller, Panel, Vertical
Colour Fastness (scale of 8)	6-7 - BS EN ISO 105-B02-2014
Flammability Standard	BS 5867 Part 2 Type B
Environmental Certification	OEKO-TEX® SteP Greenshield - VOC Safe Fabrics
Bacteria & Fungal Resistant	ASTM G21, Ultra-Fresh*
Cleaning	Gently wipe clean with a soft, damp cloth. Allow to dry in down position.

\*Ultra-Fresh is a registered trademark of Microban Products Company

Solar, Optical & Colour Fastness Properties																			
	Solar			Visual			UV Block	CF	DP	SC - EN 14501					Gtot				
	R <sub>S</sub>	A <sub>S</sub>	T <sub>S</sub>	R <sub>V</sub>	A <sub>V</sub>	T <sub>V</sub>				A	B	C	D	E	A	B	C	D	E
<b>Sheer</b>																			
Feather	57	0	43	57	0	43	36	6	0	0.50	0.50	0.45	0.30	0.43	0.44	0.43	0.39	0.26	0.38
<b>Light Filtering</b>																			
Cotton	80	9	11	85	5	10	100	6	0	0.30	0.34	0.36	0.27	0.35	0.26	0.29	0.31	0.24	0.31
Mist	63	27	10	53	44	3	100	6	0	0.41	0.43	0.42	0.29	0.41	0.36	0.38	0.36	0.25	0.36
Hemp	74	15	11	73	21	6	100	6	0	0.34	0.37	0.38	0.28	0.37	0.29	0.32	0.33	0.24	0.32
Linen	77	10	13	80	9	11	100	7	0	0.32	0.35	0.37	0.28	0.36	0.28	0.31	0.32	0.24	0.32
Slate	65	28	7	50	49	1	100	6	0	0.39	0.42	0.41	0.29	0.40	0.34	0.37	0.36	0.25	0.35



**Solar Gain:** The amount of heat increase resulting from solar energy entering a room. It is the total of three separate parts - the amount of energy transmitted directly into the room, the energy which is absorbed by the blind and the proportion of energy which is absorbed by the window.

**R:** % of reflected heat and light.  
**A:** % of absorbed heat and light.  
**T:** % of transmitted heat and light.  
**UV Block:** the % of UV light blocked by the fabric.

**Colour Fastness (CF):** Scale of 8, BS EN ISO 105-B02-2014.  
**Darkening Performance (DP):** Scale of 0-4. 0: lowest opacity 4: highest. A rating of 4 indicates the product is completely opaque with no pinholes or light transfer.

**Shading Co-efficient (SC):** The solar heat gain with the blind at the window divided by the solar heat gain with no blind at the window. The lower the shading co-efficient, the higher the efficiency of the fabric.  
**Gtot:** Amount of heat entering through the glazing and shading combined.

**Glazing system (EN 410)**  
**A:** Clear Single Glazing.  
**B:** Clear Double Glazing.  
**C:** Clear Double Glazing Low Emissivity.  
**D:** Solar Control Double Glazing Low Emissivity.  
**E:** Triple Glazing.

# VERMONT



t: +44 (0)161 882 5050 e: commercial@louvolite.com  
www.louvolitecommercial.com