

Pictured: Carnival Blackout Luna



CARNIVAL BLACKOUT

ROLLER, VERTICAL AND PANEL BLINDS

A flame retardant, plain range in 10 colours, with a self-coloured blackout coating on the reverse of the fabric. Carnival Blackout features Louvolite Coronasafe™, Ultra-Fresh* and Greenshield.

Composition: 100% Polyester

Fabric Width: 2.05m (80")

Louvre Width: 89mm (3½")

Weight: 449g/m² (13.2oz/yd²)

Fabric Thickness : 0.39mm (0.02")



LOUVOLITE

CARNIVAL BLACKOUT

SOLAR, OPTICAL AND COLOUR FASTNESS PROPERTIES

	SOLAR			OPTICAL			UV block				G VALUE				G TOT
	T _s	R _s	A _s	T _o	R _o	A _o		SC	CF	Dim out	SG	DG	TG	DG LE	
China White	0	78	22	0	87	13	100	0.25	4	5	0.26	0.30	0.31	0.32	0.53
Cream	0	76	24	0	83	17	100	0.27	5+	5	0.27	0.31	0.32	0.32	0.06
Dusk	0	68	32	0	60	40	100	0.34	4	5	0.32	0.35	0.34	0.35	0.08
Glacier	0	68	32	0	67	33	100	0.34	4	5	0.32	0.35	0.34	0.35	0.08
Ivory	0	75	25	0	81	19	100	0.28	5	5	0.27	0.31	0.32	0.32	0.06
Luna	0	64	36	0	59	41	100	0.38	4	5	0.34	0.37	0.35	0.36	0.09
Papaya	0	70	30	0	73	27	100	0.32	5	5	0.30	0.34	0.33	0.34	0.07
Raven	0	33	67	0	32	68	100	0.68	4	5	0.52	0.52	0.44	0.46	0.17
Shadow	0	42	58	0	43	57	100	0.59	5+	5	0.47	0.48	0.42	0.43	0.15
Wisteria	0	68	32	0	67	33	100	0.34	4	5	0.32	0.35	0.34	0.35	0.08

T: % Transmittance
R: % Reflectance
A: % Absorption

UV Block: the % of UV light blocked by the fabric
SC: Shading Co-efficient
CF: Colour Fastness

Dim out:
1 = High light penetration
4 = Low light penetration
5 = Blockout

G Value: amount of heat transmitted through the glazing
SG: Single Glazed

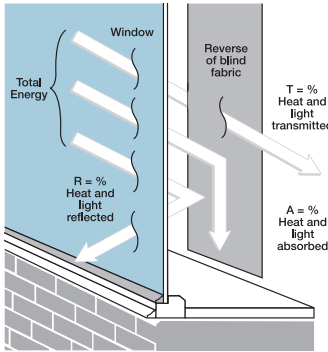
DG: Double Glazed
TG: Triple Glazed
DG LE: Double Glazed Low Emissivity.

GTOT: The amount of heat transmitted through the combination of glass and solar shading.

SOLAR GAIN: The amount of heat increase resulting from solar energy entering a room. It is the total of three separate parts - the amount of energy transmitted directly into the room, the energy which is absorbed by the blind and the proportion of energy which is absorbed by the window.

SHADING CO-EFFICIENT: The solar heat gain with the blind at the window divided by the solar heat gain with no blind at the window. The lower the shading co-efficient, therefore, the higher the efficiency of the fabric. The test results in the table above have been achieved using a single 6mm glass glazing system.

G TOT: When the G-value (a measure of total solar energy that passes through the glazing system and the blind fabric) is combined with the value of the shading.



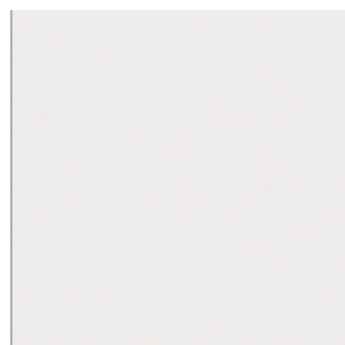
Your Louvolite® Performance Fabrics Distributor:



Manufactured in the UK

CI/SfB 1976 reference by SfB Agency		
(76.7)	X	

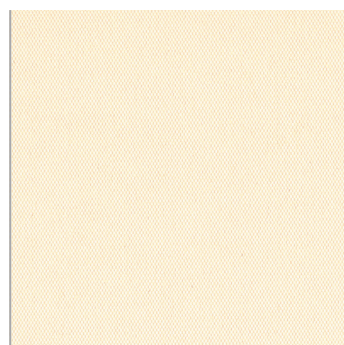
S060601-19-CaB 01.22



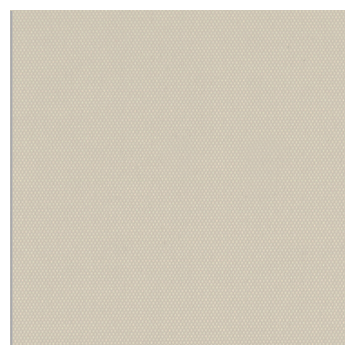
China White



Cream



Ivory



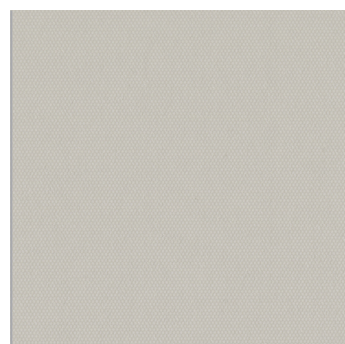
Papaya



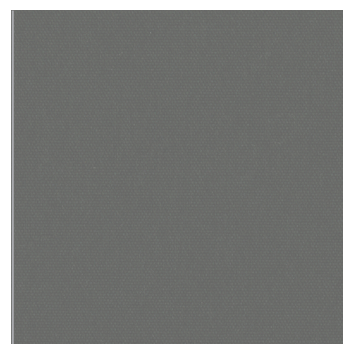
Dusk



Wisteria



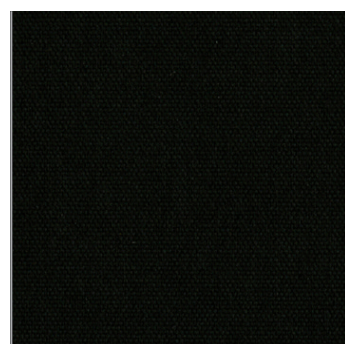
Luna



Shadow



Glacier



Raven



CARNIVAL BLACKOUT

Fabric Composition

100% polyester

Fabric Width

2.05m (80")

Vertical Louvre Width

89mm (3½")
Other widths available on request

Fabric Weight

449g/m² (13.2oz/yd²)

Fabric Thickness

0.39mm (0.02")

Flammability Standards

Carnival Blackout meets FR standard BS 5867 Part 2 Type B. Further information is available on request.

Colour Fastness

Tested in accordance with BS EN ISO 105-B01:1999

Cleaning

Carnival Blackout fabrics can be wiped clean. See manufacturers instructions. Tested in accordance with BS EN 26330:1994 method 7a.

Louvolite Coronasafe™

Fabrics treated with Louvolite Coronasafe™ help protect against coronavirus. On contact, Coronasafe eliminates 99% of coronavirus from the fabric's surface within an hour.

Ultra-Fresh*

A fabric treated with Ultra-Fresh* protects against the growth of odour causing bacteria and fungi, preserving fabric freshness.

*Ultra-Fresh® is a registered trademark of Microban Products Company.

Greenshield

Fabrics featuring Greenshield have been tested to confirm no harmful VOC's or hazardous substances will be released into the environment in quantities that are recognised as potentially dangerous to occupants of dwellings or buildings.

Properties



Please note: Blockout fabric does not create a fully blackout blind, there will be lightstrike at the edge of the blind.