



DIM OUT SPC

DAPPLE SPC[®]+

ROLLER AND VERTICAL BLINDS

A textured stitch bond, flame retardant, plain fabric in 6 colours. Dapple SPC[®]+ has a solar protective coating which is effective in the reduction of glare entering a room.

Dapple SPC[®]+ features SPC[®], Ultra-Fresh* and is a Greenshield fabric.

Composition: 100% Polyester

Fabric Width: 2.00m (78")

Louvre Width: 89mm (3½") or 127mm (5")

Weight: 313g/m² (9.2oz/yd²)

Fabric Thickness: 0.76mm (0.03")



LOUVOLITE

DAPPLE SPC[®]+

SOLAR, OPTICAL AND COLOUR FASTNESS PROPERTIES

	SOLAR			OPTICAL			UV block	SC	CF	DIM out	G VALUE				G TOT
	T _s	R _s	A _s	T _o	R _o	A _o					SG	DG	TG	DG LE	
Cream	15	52	33	1	55	44	100	0.50	6+	3	0.43	0.44	0.39	0.40	0.24
Ice	16	53	31	14	56	30	100	0.49	6+	3	0.42	0.43	0.39	0.40	0.24
Linen	10	70	20	5	70	25	100	0.32	6	3	0.32	0.34	0.34	0.34	0.15
Ocean	6	50	44	0	27	73	100	0.52	6	3	0.43	0.44	0.39	0.41	0.17
Slate	11	43	46	3	39	58	100	0.58	6+	3	0.48	0.48	0.41	0.43	0.23
Steel	7	54	39	0	36	64	100	0.48	6	3	0.41	0.42	0.38	0.39	0.17

T: % Transmittance
R: % Reflectance
A: % Absorption

UV Block: the % of UV light blocked by the fabric
SC: Shading Co-efficient
CF: Colour Fastness

Dim out:
1 = High light penetration
4 = Low light penetration
5 = Blockout

G Value: amount of heat transmitted through the glazing
SG: Single Glazed

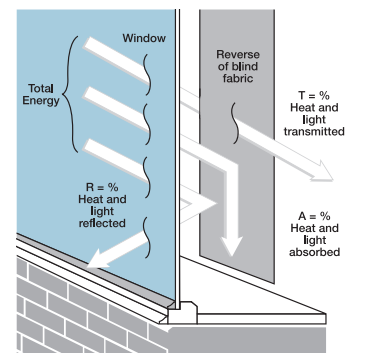
DG: Double Glazed
TG: Triple Glazed
DG LE: Double Glazed Low Emissivity.

GTOT: The amount of heat transmitted through the combination of glass and solar shading.

SOLAR GAIN: The amount of heat increase resulting from solar energy entering a room. It is the total of three separate parts - the amount of energy transmitted directly into the room, the energy which is absorbed by the blind and the proportion of energy which is absorbed by the window.

SHADING CO-EFFICIENT: The solar heat gain with the blind at the window divided by the solar heat gain with no blind at the window. The lower the shading co-efficient, therefore, the higher the efficiency of the fabric. The test results in the table above have been achieved using a single 6mm glass glazing system.

G TOT: When the G-value (a measure of total solar energy that passes through the glazing system and the blind fabric) is combined with the value of the shading.



Your Louvolite[®] Performance Fabrics Distributor:



CI/SfB 1976 reference by SfB Agency

(76.7)	X
--------	---

DAPPLE SPC[®]+

Fabric Composition

100% polyester

Fabric Width

2.00m (78")

Vertical Louvre Width

89mm (3½") or 127mm (5")
Other widths available on request

Fabric Weight

313g/m² (9.2oz/yd²)

Fabric Thickness

0.39mm (0.02")

Flammability Standards

Dapple SPC[®]+ meets FR standard BS 5867 Part 2 Type B. Further information is available on request.

Colour Fastness

Tested in accordance with BS EN ISO 105-B01:1999

Cleaning

Dapple SPC[®]+ fabrics can be wiped clean. See manufacturers instructions. Tested in accordance with BS EN 26330:1994 method 7a.

SPC[®]

A Solar Protective Coating applied to the reverse of the fabric that reduces glare, reflects and filters light more effectively than conventional fabrics.

Greenshield

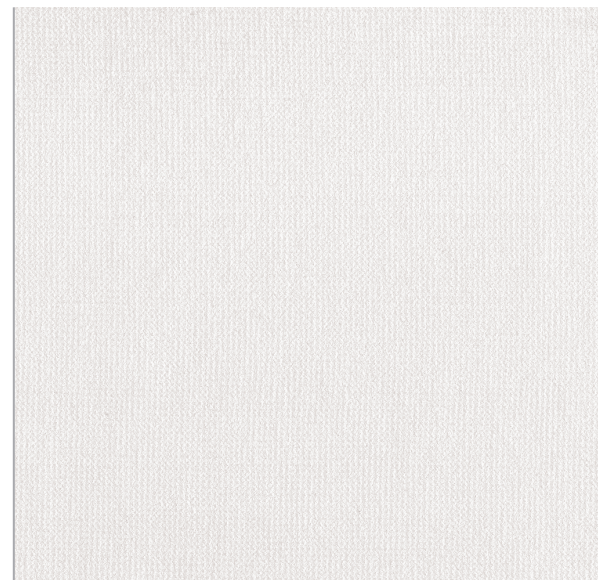
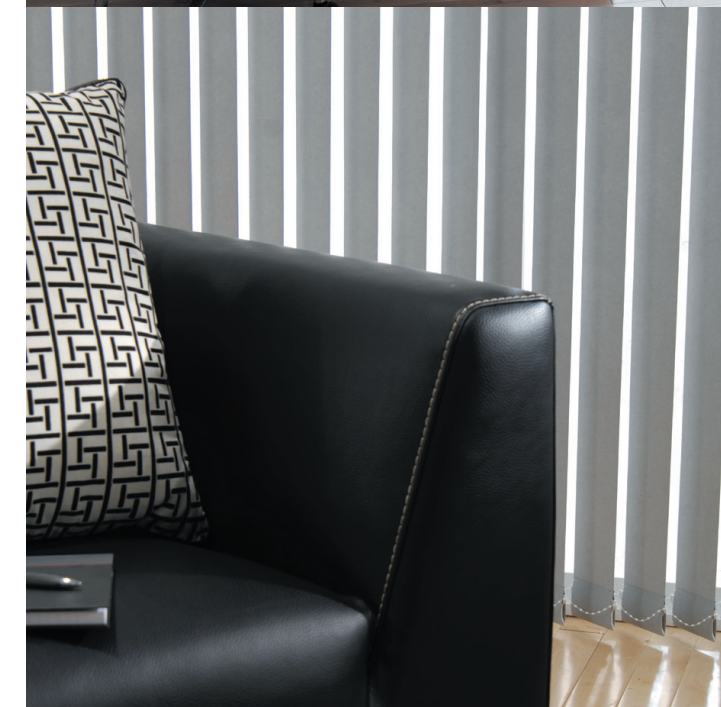
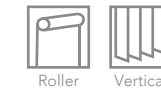
Fabrics featuring Greenshield have been tested to confirm no harmful VOC's or hazardous substances will be released into the environment in quantities that are recognised as potentially dangerous to occupants of dwellings or buildings.

Ultra-Fresh*

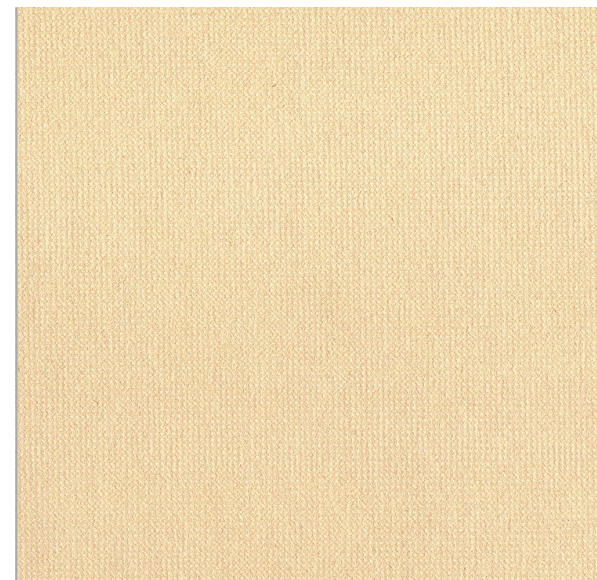
A fabric treated with Ultra-Fresh* protects against the growth of odour causing bacteria and fungi, preserving fabric freshness.

*Ultra-Fresh[®] is a registered trademark of Microban Products Company

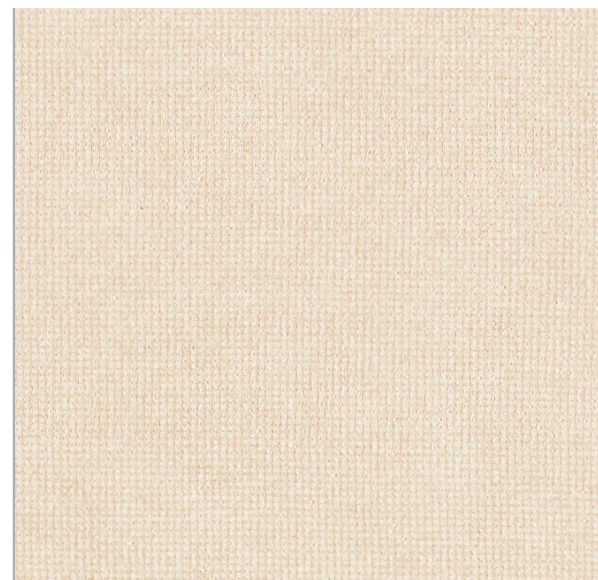
Properties



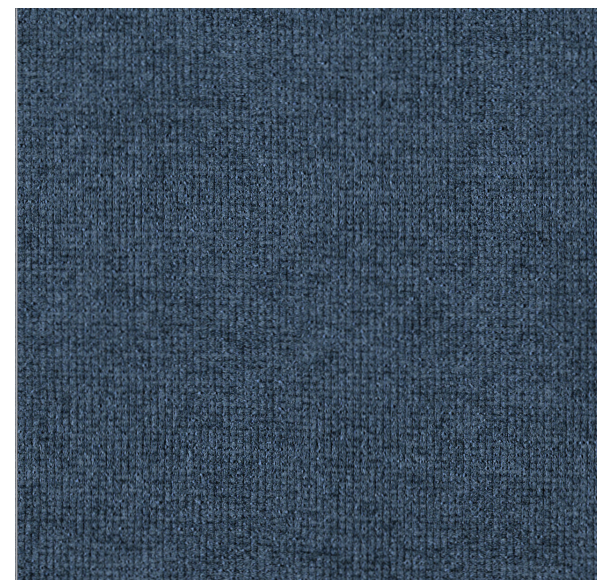
Ice



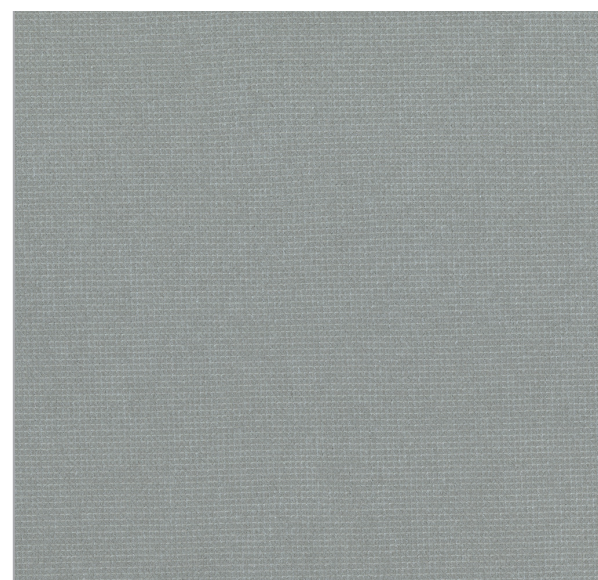
Cream



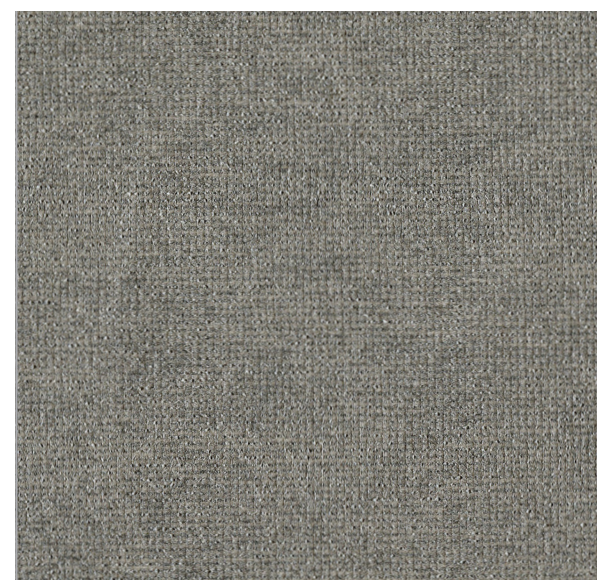
Linen



Ocean



Slate



Steel