



BLOCKOUT

EX-LITE®

ROLLER AND VERTICAL BLINDS

A robust, flame retardant, blackout fabric in 10 commercial colourways. Ex-lite® is a wipeable, moisture resistant PVC that features Ultra-Fresh*.

- Composition: 72% PVC and 28% glass fibre
- Fabric Width: 1.83m (72")
- Louvre Width: 89mm (3½") or 127mm (5")
- Weight: 423g/m² (12.5oz/yd²)
- Fabric Thickness: 0.35mm (0.01")



LOUVOLITE

EX-LITE® SOLAR, OPTICAL AND COLOUR FASTNESS PROPERTIES

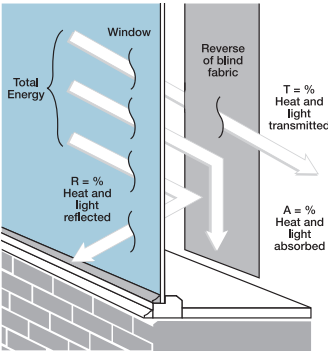
	SOLAR			OPTICAL							G VALUE				G TOT
	T _s	R _s	A _s	T _O	R _O	A _O	UV block	SC	CF	DIM out	SG	DG	TG	DG LE	
Anthracite	0	19	81	0	21	79	100	0.82	6	5	0.60	0.60	0.48	0.51	0.21
Bisque	0	60	40	0	68	32	100	0.42	6	5	0.36	0.39	0.36	0.37	0.10
Black	0	4	96	0	4	96	100	0.96	6	5	0.69	0.66	0.52	0.55	0.25
Canvas	0	74	26	0	86	14	100	0.29	6	5	0.28	0.32	0.32	0.33	0.29
Cream	0	61	39	0	68	32	100	0.41	6	5	0.36	0.38	0.36	0.37	0.10
Light Grey	0	49	51	0	55	45	100	0.53	6	5	0.43	0.44	0.39	0.41	0.13
Navy	0	9	91	0	6	94	100	0.91	6	5	0.66	0.64	0.51	0.54	0.26
Slate	0	27	73	0	30	70	100	0.74	6	5	0.55	0.55	0.46	0.48	0.19
Snow	0	77	23	0	90	10	100	0.26	6	5	0.26	0.26	0.31	0.32	0.06
White	0	69	31	0	77	23	100	0.33	6	5	0.31	0.31	0.34	0.34	0.08

- T: % Transmittance
R: % Reflectance
A: % Absorption
- UV Block: the % of UV light blocked by the fabric
SC: Shading Co-efficient
CF: Colour Fastness
- Dim out:
1 = High light penetration
4 = Low light penetration
5 = Blockout
- G Value: amount of heat transmitted through the glazing
SG: Single Glazed
DG: Double Glazed
TG: Triple Glazed
DG LE: Double Glazed Low Emissivity.
- GTOT: The amount of heat transmitted through the combination of glass and solar shading.


SOLAR GAIN: The amount of heat increase resulting from solar energy entering a room. It is the total of three separate parts - the amount of energy transmitted directly into the room, the energy which is absorbed by the blind and the proportion of energy which is absorbed by the window.

SHADING CO-EFFICIENT: The solar heat gain with the blind at the window divided by the solar heat gain with no blind at the window. The lower the shading co-efficient, therefore, the higher the efficiency of the fabric. The test results in the table above have been achieved using a single 6mm glass glazing system.

G TOT: When the G-value (a measure of total solar energy that passes through the glazing system and the blind fabric) is combined with the value of the shading.

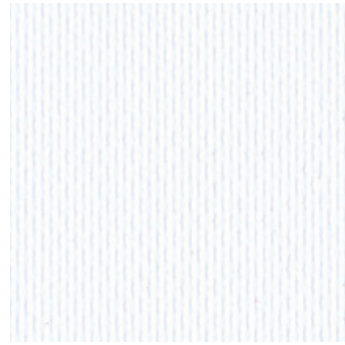


Your Louvolite® Performance Fabrics Distributor:

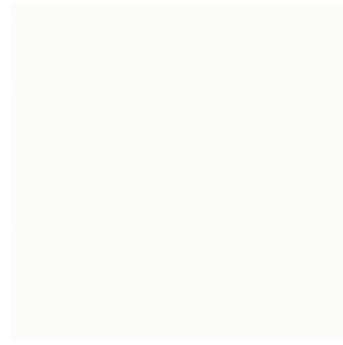


Manufactured in the UK

CI/SfB 1976 reference by SfB Agency		
(76.7)	X	



White



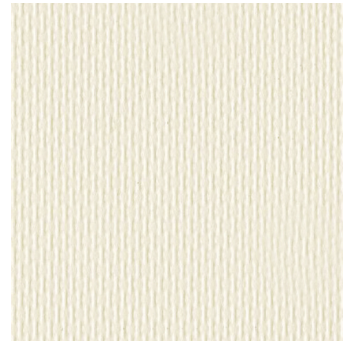
Snow



Cream



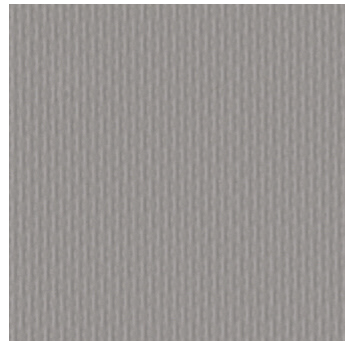
Light Grey



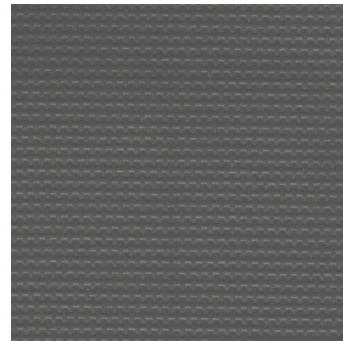
Canvas



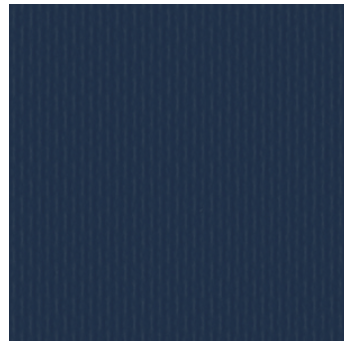
Bisque



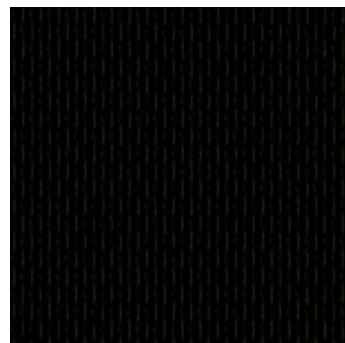
Slate



Anthracite



Navy



Black

EX-LITE®

Fabric Composition

72% pvc 28% glass fibre

Fabric Width

1.83m (72")

Vertical Louvre Width

89mm (3½") or 127mm (5")

Other widths available on request

Fabric Weight

423g/m² (12.5oz/yd²)

Fabric Thickness

0.35mm (0.01")

Flammability Standards

Ex-lite® meets FR standard BS 5867 Part 2 Type B. Further information is available on request.

Colour Fastness

Tested in accordance with BS EN ISO 105-B01:1999

Cleaning

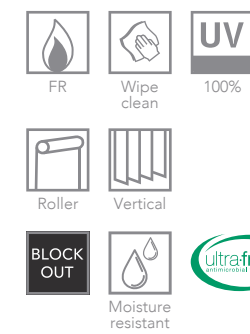
Ex-lite® fabrics can be wiped clean. See manufacturers instructions. Tested in accordance with BS EN 26330:1994 method 7a.

Ultra-Fresh*

A fabric treated with Ultra-Fresh* protects against the growth of odour causing bacteria and fungi, preserving fabric freshness.

*Ultra-Fresh® is a registered trademark of Microban Products Company.

Properties



Please note: Blockout fabric does not create a fully blackout blind, there will be lightstrike at the edge of the blind.