

Pictured: Festival SPC® Low E Raven



DIM OUT SPC

PLEATED

# FESTIVAL SPC® LOW E

PLEATED BLINDS

A flame retardant, plain pleated range in 10 colours, with a solar protective coating on the reverse of the fabric. Festival SPC Low E features SPC®, Ultra-Fresh\* and is a Greenshield fabric.

- Composition: 100% Polyester
- Fabric Width: 2.10m (82.7")
- Weight: 130g/m<sup>2</sup> (3.8oz/yd<sup>2</sup>)
- Fabric Thickness: 0.18mm (0.007")



LOUVOLITE

## FESTIVAL SPC® LOW E

SOLAR, OPTICAL AND COLOUR FASTNESS PROPERTIES

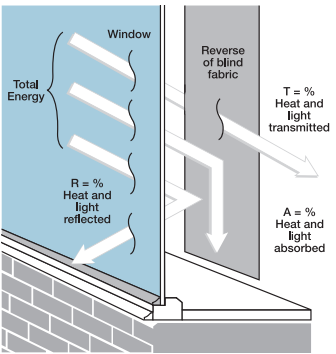
	SOLAR			OPTICAL			UV block				G VALUE				G TOT
	T <sub>s</sub>	R <sub>s</sub>	A <sub>s</sub>	T <sub>o</sub>	R <sub>o</sub>	A <sub>o</sub>		SC	CF	Dim out	SG	DG	TG	DG LE	
Breton Blue	5	73	22	2	82	16	100	0.29	6+	3	0.24	0.29	0.31	0.31	0.11
China White	20	77	3	19	81	0	100	0.26	6+	2	0.24	0.29	0.31	0.31	0.21
Cloud	18	76	6	14	84	2	100	0.27	6+	2	0.24	0.29	0.31	0.31	0.19
Cream	21	76	3	19	81	0	100	0.27	6+	2	0.24	0.29	0.31	0.31	0.21
Ivory	21	77	2	18	82	0	100	0.26	6+	2	0.24	0.29	0.31	0.31	0.21
Luna	18	75	7	16	83	1	100	0.28	6+	2	0.24	0.29	0.31	0.31	0.20
Raven	4	71	25	2	81	17	100	0.31	6+	3	0.24	0.29	0.31	0.31	0.10
Shadow	9	74	17	7	83	10	100	0.29	6+	3	0.24	0.29	0.31	0.31	0.14
Taupe	15	77	8	12	85	3	100	0.26	6+	3	0.37	0.39	0.36	0.37	0.17
Willow	14	76	10	12	85	3	100	0.27	6+	3	0.50	0.50	0.43	0.45	0.17

- T: % Transmittance  
R: % Reflectance  
A: % Absorption
- UV Block: the % of UV light blocked by the fabric  
SC: Shading Co-efficient  
CF: Colour Fastness
- Dim out:  
1 = High light penetration  
4 = Low light penetration  
5 = Blockout
- G Value: amount of heat transmitted through the glazing  
SG: Single Glazed
- DG: Double Glazed  
TG: Triple Glazed  
DG LE: Double Glazed Low Emissivity.
- GTOT: The amount of heat transmitted through the combination of glass and solar shading.

SOLAR GAIN: The amount of heat increase resulting from solar energy entering a room. It is the total of three separate parts - the amount of energy transmitted directly into the room, the energy which is absorbed by the blind and the proportion of energy which is absorbed by the window.

SHADING CO-EFFICIENT: The solar heat gain with the blind at the window divided by the solar heat gain with no blind at the window. The lower the shading co-efficient, therefore, the higher the efficiency of the fabric. The test results in the table above have been achieved using a single 6mm glass glazing system.

G TOT: When the G-value (a measure of total solar energy that passes through the glazing system and the blind fabric) is combined with the value of the shading.



Your Louvolite® Performance Fabrics Distributor:

--	--	--

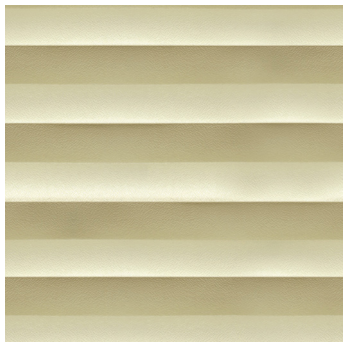
Manufactured in the UK

CI/SfB 1976 reference by SfB Agency		
(76.7)	X	

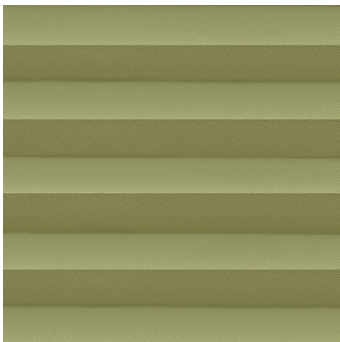




China White



Cream



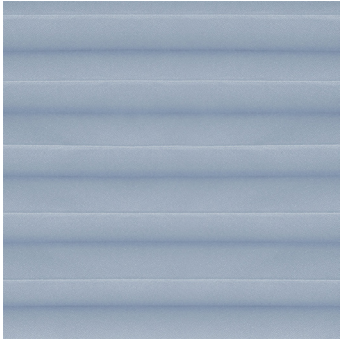
Willow



Luna



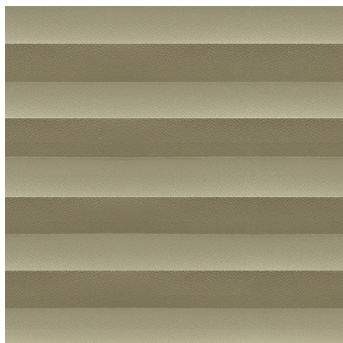
Ivory



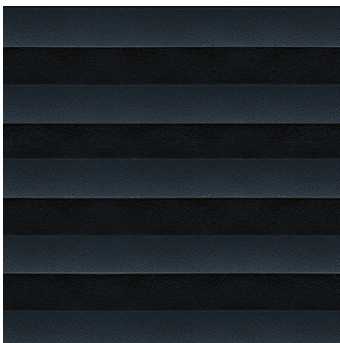
Cloud



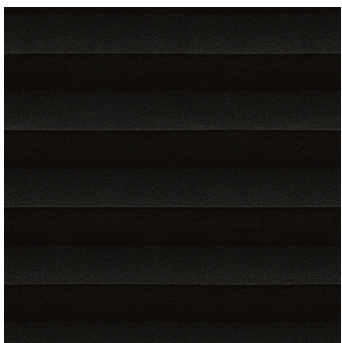
Shadow



Taupe



Breton Blue



Raven

# FESTIVAL SPC® LOW E

## Fabric Composition

100% polyester

## Fabric Width

2.10m (82.7")

## Fabric Weight

130g/m<sup>2</sup> (3.8oz/yd<sup>2</sup>)

## Fabric Thickness

0.18mm (0.007")

## Flammability Standards

Festival SPC® Low E meets FR standard BS 5867 Part 2 Type B. Further information is available on request.

## Colour Fastness

Tested in accordance with BS EN ISO 105-B01:1999

## Cleaning

Festival SPC® Low E fabrics are no clean. See manufacturers instructions. Tested in accordance with BS EN 26330:1994 method 7a.

## SPC®

A Solar Protective Coating applied to the reverse of the fabric that reduces glare, reflects and filters light more effectively than conventional fabrics.

## Greenshield

Fabrics featuring Greenshield have been tested to confirm no harmful VOC's or hazardous substances will be released into the environment in quantities that are recognised as potentially dangerous to occupants of dwellings or buildings.

## Ultra-Fresh\*

A fabric treated with Ultra-Fresh\* protects against the growth of odour causing bacteria and fungi, preserving fabric freshness.

\*Ultra-Fresh® is a registered trademark of Microban Products Company.

## Properties

