



DIM OUT

## VOILE

ROLLER, VERTICAL, PANEL AND PLEATED BLINDS

A translucent, flame retardant fabric in a palette of 8 colours.

Voile features Ultra-Fresh\* and is a Greenshield fabric.

Composition: 100% Polyester

Fabric Width: 2.00m (78")

Louvre Width: 89mm (3½") or 127mm (5")

Weight: 131g/m² (3.9oz/yd²)

Fabric Thickness: 0.36mm (0.01")



LOUVOLITE

## VOILE

SOLAR, OPTICAL AND COLOUR FASTNESS PROPERTIES

	SOLAR			OPTICAL			UV block				G VALUE			DG LE	G TOT
	T <sub>s</sub>	R <sub>s</sub>	A <sub>s</sub>	T <sub>o</sub>	R <sub>o</sub>	A <sub>o</sub>		SC	CF	DIM out	SG	DG	TG		
Cobalt Blue	21	42	37	19	39	42	81	0.81	5	2	0.50	0.49	0.42	0.44	0.30
Cream	39	61	0	30	70	0	79	0.65	5	1	0.41	0.41	0.37	0.38	0.37
Grape	30	54	16	20	40	40	81	0.73	5	2	0.45	0.45	0.39	0.41	0.34
Moondust	25	51	24	23	50	27	81	0.64	5	2	0.27	0.30	0.31	0.31	0.31
Papaya	33	60	7	25	53	22	80	0.67	5	2	0.41	0.41	0.37	0.38	0.35
Sage	34	66	0	34	66	0	79	0.62	5	1	0.37	0.38	0.35	0.36	0.37
Sandshell	35	65	0	32	64	4	80	0.72	5	1	0.38	0.38	0.35	0.36	0.35
White	30	70	0	30	70	0	79	0.66	6	2	0.34	0.36	0.34	0.35	0.38

T: % Transmittance  
R: % Reflectance  
A: % Absorption

UV Block: the % of UV  
light blocked by the fabric  
SC: Shading Co-efficient  
CF: Colour Fastness

Dim out:  
1 = High light penetration  
4 = Low light penetration  
5 = Blockout

G Value: amount  
of heat transmitted  
through the glazing  
SG: Single Glazed

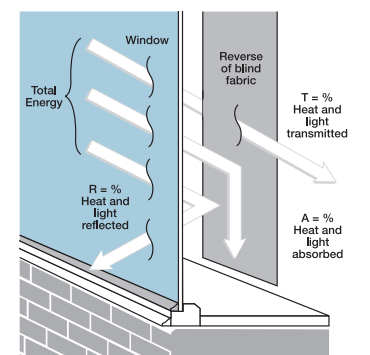
DG: Double Glazed  
TG: Triple Glazed  
DG LE: Double Glazed  
Low Emissivity.

GTOT: The amount of  
heat transmitted through  
the combination of glass  
and solar shading.

**SOLAR GAIN:** The amount of heat increase resulting from solar energy entering a room. It is the total of three separate parts - the amount of energy transmitted directly into the room, the energy which is absorbed by the blind and the proportion of energy which is absorbed by the window.

**SHADING CO-EFFICIENT:** The solar heat gain with the blind at the window divided by the solar heat gain with no blind at the window. The lower the shading co-efficient, therefore, the higher the efficiency of the fabric. The test results in the table above have been achieved using a single 6mm glass glazing system.

**G TOT:** When the G-value (a measure of total solar energy that passes through the glazing system and the blind fabric) is combined with the value of the shading.



Your Louvolite® Performance Fabrics Distributor:



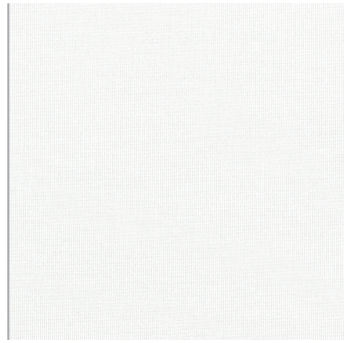
Manufactured  
in the UK

CI/SfB 1976 reference by SfB Agency

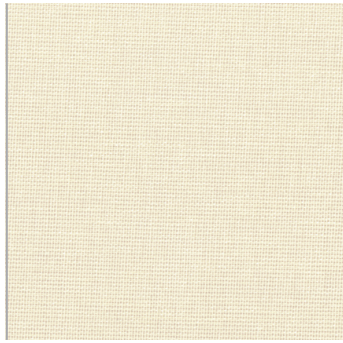
(76.7) X

S06060119-Vo 01.22

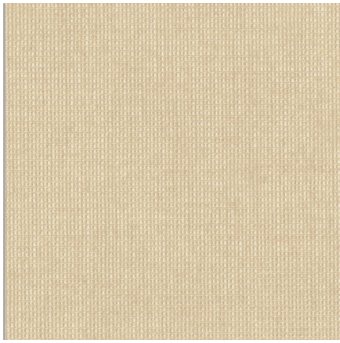




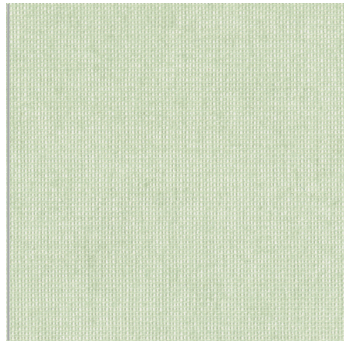
White



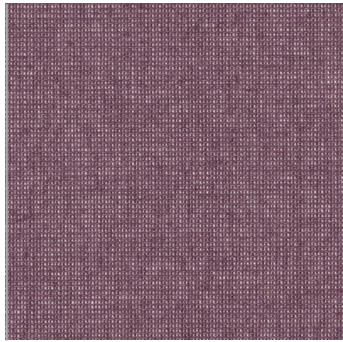
Cream



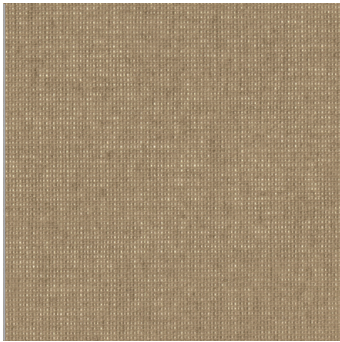
Sandshell



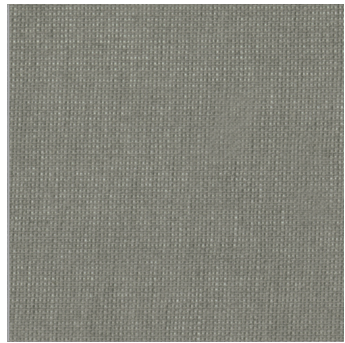
Sage



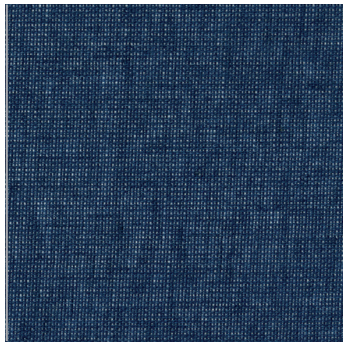
Grape



Papaya



Moondust



Cobalt Blue

# VOILE

### Fabric Composition

100% polyester

### Fabric Width

2.00m (78")

### Vertical Louvre Width

89mm (3½") or 127mm (5")  
Other widths available on request

### Fabric Weight

131g/m² (3.9oz/yd²)

### Fabric Thickness

0.36mm (0.01")

### Flammability Standards

Voile meets FR standard BS 5867 Part 2 Type B.  
Further information is available on request.

### Colour Fastness

Tested in accordance with BS EN ISO 105-B01:1999

### Cleaning

Voile fabrics can be wiped clean. See manufacturers instructions. Tested in accordance with BS EN 26330:1994 method 7a.

### Ultra-Fresh\*

A fabric treated with Ultra-Fresh\* protects against the growth of odour causing bacteria and fungi, preserving fabric freshness.

\*Ultra-Fresh® is a registered trademark of Microban Products Company.

### Greenshield

Fabrics featuring Greenshield have been tested to confirm no harmful VOC's or hazardous substances will be released into the environment in quantities that are recognised as potentially dangerous to occupants of dwellings or buildings.

### Properties

