

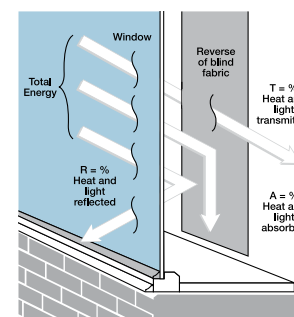
# PERFORMANCE FABRIC

## PRINT DESIGN COLLECTION

Shading in hospitality, education and healthcare doesn't need to be just plain!  
These flame retardant print fabrics are great in niche commercial sectors.



FR Fabric Prints	Vertical	Roller	Panel	Weight (g/m <sup>2</sup> )	Max Width (cm)	BO	MR	Ultra-fresh*	Greenshield	Coronasafe	Solar			Optical			UV (%)	SC	CF	DIM out	G Value				G TOT
											T <sub>s</sub>	R <sub>s</sub>	A <sub>s</sub>	T <sub>o</sub>	R <sub>o</sub>	A <sub>o</sub>					SG	DG	TG	DG LE	
ABC Characters		•	•	447	210	•					0	81	19	0	91	9	100	0.22	5+	5	0.24	0.28	0.30	0.30	0.05
Birdsong Daybreak		•	•	270	205			•	•	•	14	73	13	11	78	11	100	0.29	5+	3	0.31	0.33	0.33	0.33	0.17
Birdsong Midnight		•	•	270	205			•	•	•	7	75	18	5	83	12	100	0.28	5+	3	0.28	0.32	0.32	0.33	0.12
Como Alba	•	•	•	272	205			•	•	•	8	77	15	6	80	14	100	0.26	4	3	0.27	0.31	0.32	0.32	0.12
Como Lago	•	•	•	272	205			•	•	•	10	79	11	6	87	7	100	0.24	5	3	0.26	0.30	0.31	0.31	0.13
Como Odra	•	•	•	272	205			•	•	•	10	79	11	6	87	7	100	0.24	5+	3	0.26	0.30	0.31	0.31	0.13
Cosmic Dream		•	•	447	210	•			•		0	81	19	0	91	9	100	0.22	5	5	0.24	0.28	0.30	0.30	0.05
Cotton Flower Blush	•	•	•	263	205			•	•	•	15	77	8	13	81	6	100	0.26	5+	3	0.28	0.31	0.32	0.32	0.17
Cotton Flower Mineral	•	•	•	263	205			•	•	•	15	78	7	13	83	4	100	0.25	5+	3	0.28	0.31	0.31	0.32	0.17
Cotton Flower Ochre	•	•	•	263	205			•	•	•	14	78	8	11	85	4	100	0.25	5	3	0.28	0.31	0.31	0.32	0.13
Dinosaurs Prehistoric	•	•	•	452	205	•			•		0	75	25	0	84	16	100	0.28	5+	5	0.27	0.31	0.32	0.32	0.06
Flores Autumn	•	•	•	263	205			•	•	•	16	82	2	12	88	0	100	0.21	4	3	0.26	0.29	0.30	0.30	0.16
Flores Spring	•	•	•	263	205			•	•	•	14	77	9	12	83	5	100	0.26	5+	3	0.28	0.31	0.32	0.32	0.17
Hérons Lupin	•	•	•	450	205	•			•		0	75	25	0	84	16	100	0.28	5+	5	0.27	0.31	0.32	0.32	0.06
Hérons Mulberry	•	•	•	450	205	•			•		0	75	25	0	84	16	100	0.28	5+	5	0.27	0.31	0.32	0.32	0.06
Lily Mellow Sage	•	•	•	263	205			•	•	•	14	77	9	12	84	4	100	0.26	5	3	0.28	0.31	0.32	0.32	0.17
Lily Muted Duckegg	•	•	•	263	205			•	•	•	12	76	12	10	82	8	100	0.27	5+	3	0.28	0.32	0.32	0.32	0.15
Lily Spring Blossom	•	•	•	263	205			•	•	•	14	78	8	12	82	6	100	0.25	5+	3	0.28	0.31	0.31	0.32	0.16
Marble Silver	•	•	•	432	183	•	•	•	•	•	0	80	20	0	91	9	100	0.23	5+	5	0.24	0.29	0.31	0.31	0.05
Mermaids Indigo	•	•	•	447	210	•			•		0	81	19	0	91	9	100	0.22	5+	5	0.24	0.28	0.30	0.30	0.05
Night Night Glow	•			420	205	•		•	•	•	0	68	32	0	82	18	100	0.34	5	5	0.32	0.35	0.34	0.35	0.08
Night Safari Gold	•			449	205	•		•	•	•	0	33	67	0	32	68	100	0.68	4	5	0.52	0.52	0.44	0.46	0.17
Olive Aegean	•	•	•	263	205			•	•	•	14	74	12	12	79	9	100	0.29	5	3	0.30	0.33	0.32	0.33	0.17
Olive Eden	•	•	•	263	205			•	•	•	14	78	8	11	85	4	100	0.25	5+	3	0.28	0.31	0.31	0.32	0.16
Ophelia Breeze	•	•	•	263	205			•	•	•	11	79	10	7	86	7	100	0.24	5+	3	0.27	0.30	0.31	0.31	0.13
Ophelia Zephyr	•	•	•	263	205			•	•	•	15	76	9	13	83	4	100	0.27	5+	3	0.29	0.32	0.32	0.32	0.18
Peacock Feather	•	•	•	263	205			•	•	•	9	77	14	6	84	10	100	0.26	5+	3	0.27	0.31	0.32	0.32	0.13
Planetarium Cosmos	•	•	•	452	205	•			•		0	75	25	0	84	16	100	0.28	5+	5	0.27	0.31	0.32	0.32	0.06
Polygon Sorbet	•	•	•	452	205	•			•		0	75	25	0	84	16	100	0.28	5+	5	0.27	0.31	0.32	0.32	0.06
Polygon Tangerine	•	•	•	452	205	•			•		0	75	25	0	84	16	100	0.28	5+	5	0.27	0.31	0.32	0.32	0.06
Reverie Basalt	•	•	•	423	183	•	•	•	•	•	0	82	18	0	94	6	100	0.21	5+	5	0.23	0.28	0.30	0.30	0.04
Swedish Birch Silver	•	•	•	263	205			•	•	•	14	77	9	11	84	5	100	0.26	5+	3	0.28	0.31	0.32	0.32	0.16
Sweet Pea Dew	•	•	•	263	205			•	•	•	15	85	0	11	89	0	100	0.18	5+	3	0.24	0.27	0.29	0.29	0.16
Sweet Pea Seed	•	•	•	263	205			•	•	•	16	77	7	14	82	4	100	0.26	5	3	0.28	0.31	0.32	0.32	0.18
Sweet Pea Stem Green	•	•	•	263	205			•	•	•	25	75	0	22	78	0	90	0.28	5+	2	0.31	0.33	0.32	0.33	0.26
Times Tables Multi	•	•	•	447	210	•			•		0	81	19	0	91	9	100	0.22	5+	5	0.24	0.28	0.30	0.30	0.05
Unicorn Magic Whimsical	•	•	•	447	210	•			•		0	81	19	0	91	9	100	0.22	5	5	0.24	0.28	0.30	0.30	0.05
Wild Thing Safari	•	•	•	447	210	•			•		0	81	19	0	91	9	100	0.22	5+	5	0.24	0.28	0.30	0.30	0.05
Willow Birch White	•	•	•	452	205	•			•		0	75	25	0	84	16	100	0.28	5+	5	0.27	0.31	0.32	0.32	0.06
Willow Brazen Yellow	•	•	•	452	205	•			•		0	75	25	0	84	16	100	0.28	5+	5	0.27	0.31	0.32	0.32	0.06
Willow Dusky Rose	•	•	•	452	205	•			•		0	75	25	0	84	16	100	0.28	5+	5	0.27	0.31	0.32	0.32	0.06
Willow Morning Mist	•	•	•	452	205	•			•		0	75	25	0	84	16	100	0.28	5+	5	0.27	0.31	0.32	0.32	0.06



FR: Flame Retardant  
BO: Blockout Fabric  
MR - Moisture Resistant: Suitable for high moisture environments.  
\*Ultra-Fresh® is a registered trademark of Microban Products Company.

Fabrics treated with Louvolite Coronasafe™ help protect against coronavirus. On contact, Coronasafe eliminates 99% of coronavirus from the fabric's surface within an hour.

UV %: The % of UV light blocked by the fabric.  
SC - Shading co-efficient: The solar heat gain with the blind at the window divided by the solar heat gain with no blind at the window. The lower the shading co-efficient the higher the efficiency of the fabric.

A fabric treated with Ultra-Fresh\* protects against the growth of odour causing bacteria and fungi, preserving fabric freshness.

Solar gain: The amount of heat increase resulting from solar energy entering a room. It is the total of three separate parts - the amount of energy transmitted directly into the room, the energy which is absorbed by the blind and the proportion of energy which is absorbed by the window.

CF - Colour Fastness: Fabrics are tested in accordance with BS EN ISO 105. 1: lowest, 6: highest  
DIM out: 1: low light filtering, 4: high light filtering, 5: blackout  
G Value: Amount of heat transmitted through glazing

Fabrics featuring the Greenshield mark have been tested to confirm no harmful VOC's or hazardous substances will be released to the environment in quantities that are recognised as potentially dangerous to occupants of dwellings or buildings.

T: % of heat and light transmitted through the blind.  
R: % of heat and light reflected by the blind.  
A: % of heat and light absorbed by the blind.

SG: Single glazed. DG: Double glazed. TG: Triple glazed. DG LE: Double glazed low emissivity  
G TOT: When the G-value (a measure of total solar energy that passes through the glazing system and the blind fabric) of the glazing is combined with the value of the shading.

## LIGHT FILTERING



Flores Spring



Flores Autumn



Peacock Feather



Swedish Birch Silver



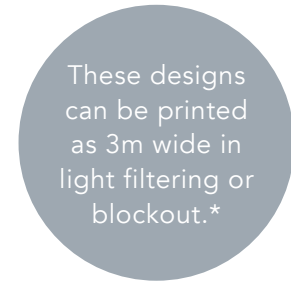
Sweet Pea Stem Green



Sweet Pea Dew



Sweet Pea Seed



Cotton Flower Blush



Cotton Flower Mineral



Cotton Flower Ochre



Bird Song Daybreak



Lily Spring Blossom



Lily Muted Duckegg



Lily Mellow Sage



Bird Song Midnight



Ophelia Zephyr



Como Lago



Como Alba



Como Odra



Ophelia Breeze



Olive Aegean



Olive Eden

## BLOCKOUT



Herons Lupin



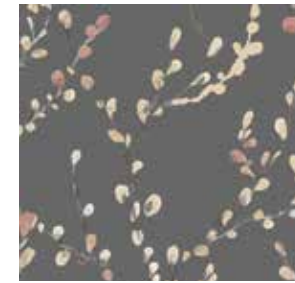
Herons Mulberry



Reverie Basalt



Marble Silver



Willow Dusky Rose



Willow Birch White



Willow Morning Mist



Willow Brazen Yellow



Polygon Sorbet



Polygon Tangerine



Wild Thing Safari



Night Safari Gold



Cosmic Dream Blush



Mermaids Indigo



Dinosaurs Prehistoric



Night Night Glow



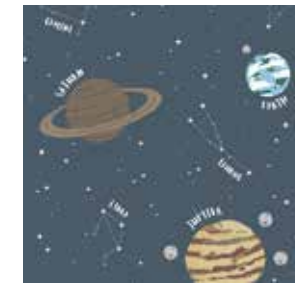
ABC Characters



Unicorn Magic Whimsical



Times Tables Multi



Planetarium Cosmos

## NEED A BESPOKE DESIGN?

With a fantastic digital printing facility on site and in-house print designers, Louvolite are able to create bespoke window blind fabric\*, up to 3m wide, for your project. Get in touch with your local Louvolite blind supplier or email Louvolite to find out more.